



ALCHEMY™



England • 1977

EXTRAORDINARY DESIGN



# ALCHEMY



England · 1977

Spring 2025

TEARS OF THE MOON



P992B  
Tears of  
The Moon  
Pendant



Weeping tears of black  
crystal for the dark secrets  
known only to the queen  
of the heavens.

P992R  
Tears of  
The Moon  
Pendant



Weeping tears of blood  
crystal for the tragic  
secrets known only to  
the queen of the heavens.

P992C  
Tears of  
The Moon  
Pendant



Weeping tears of sparkling  
crystal for the brightest  
secrets known only to the  
queen of the heavens.

Model is wearing :

P981 Midnight Memorial Necklace  
E489 Midnight Memorial Earrings

Model & Photo : @Kattslade



# Neckwear

**P989  
Sweet Death**  
Necklace

Glorifying the immortality of perfection, as perceived in the magnificent beauty of the human skull, only truly revealing its poetic harmony once stripped of its mortal mask.

**P981  
Midnight Memorial**  
Necklace

Imagine, wandering alone through the dimly gaslit alleys of Paris at la fin de siècle, following the ghost of Sebastian Melmoth - (Oscar Wilde), hopelessly searching for another chance to impress the world.

**P984  
Niflheim Lizard**  
Pendant

A deeply symbolic icon, the underworld dragon represents rebirth, transformation, resilience, and one bestowed with intuition, perception and agility.

**P990  
Light In The Dark**  
Necklace

The sensitive touch of the mysterious Kraken representing the depth of sentiment felt for such a sparkling heart of shining captivation.

**P987  
Black Paddock**  
Pendant

A midnight familiar to the most dedicated witches in English folklore, (paddock being the ancient folk name for a frog), being a close and constant companion in the sorceress' work.

**P983  
Descending Darkness**  
Choker

Out of nowhere, you are suddenly and silently enshrouded by a black cloak of eternity, destined to inhabit your pallid and futile mortal existence for ever more.

**P982  
Curse of The Undoll**  
Necklace

Please be warned and do not be deceived! The sweetest and most demure of angels, however convincing, just might not be as innocent as they seem...

**P991  
Heart of Blackness**  
Necklace

Is there anything so lovable as the dark and mysterious rose that refuses to conform to the convention of normality and stands proudest amongst the more delicate flowers?

**P988  
Mystic Moon Cat**  
Necklace

Symbolising the subconscious intuition, femininity and ferocity of the powerful and revered Egyptian goddess of the moon.

**P985  
The Augurium**  
Locket

The raven's shadow falls across the face of lovelorn Lenore, a fleeting omen of the brevity of youth and the chill of eternity. Blackened pewter locket.

**P986  
Betrothal**  
Choker (Ribbon)

Gentle pressure felt around a delicate throat inducing an amorous fervour, with this rococo masterpiece of romantic tokenism and its blood red enamelled heart of passion.



# Kings & Armwear



**R253  
The Awakening**

Ring - Sizes: L/N, Q/T, W/Y

Dragons, as is well chronicled, often have a tendency to lie dormant, gigantic, unrecognised and smouldering as a volcano with repressed violence, awaiting the fateful day when a maiden pure in spirit is brought forth in sacrifice and a heathen prophecy of all consuming fire is fulfilled.



**R255  
Mrs Mothersole's Curse**

Ring - Sizes: L/N, Q/T, W/Y

Infamously chronicled by the great Mr. James in 1904 in 'The Ash Tree', here is a spatial rendition, taken from his own vivid description as a first hand witness, of the demented, malevolent creatures seen streaming from the blazing tree trunk; the source of the witch trials legacy.



**R254  
Lunatious**

Ring - Sizes: L/N, Q/T, W/Y

The essence of an unapologetically dark and nocturnal existence.

**A145  
Betrothal**

Bracelet (Size Adjustable)



The gentle grip felt around a fragile wrist induces an amorous fervour, with this rococo masterpiece of romantic tokenism and its blood red enamelled heart of passion.

## The Borley Relic



**CS21  
The Borley Relic  
Votive Candle**

Candle Holder

Salvaged from the ashes of Borley Rectory 'The most haunted house in England'; twice burnt to the ground in circumstances most mysterious. One possessed of second sight might peer through the window and catch a glimpse of the tormented spirits that once haunted the house.

Model is wearing :

A145 Betrothal Bracelet

R253 The Awakening Ring

R254 Lunatious Ring

R255 Mrs Mothersole's Curse Ring

**ALCHEMY**  
England · 1977

© All designs are the exclusive copyright of Alchemy Carta Ltd. 2025.

[WWW.ALCHEMYENGLAND.COM](http://WWW.ALCHEMYENGLAND.COM)



# Earrings

## E491 Heart of Blackness

Earrings (Pair)

Is there anything so lovable as the dark and mysterious rose that refuses to conform to the convention of normality and stands proudest amongst the more delicate flowers?



## E488 Lunar Moth

Earrings (Pair)

This actias, nocturnal and most rare of species, bears markings uncannily akin to the lunation of our influential moon.



## E490 Churchyard

Earrings (Pair)

A curlicue of gothic cusping with jardine droppers, signifying new beginnings, sorrow and compassion for those gone before, and those who are yet to go...



## E486 Lucrezia's Fix

Earrings (Pair)

The practical woman's discreet solution to a problem 'encounter', as exemplified by the infamously licentious, incestuous and murderous 16th Centruy femme fatale, Lucrezia Borgeia.



## E489 Midnight Memorial

Earrings (Pair)

Imagine, wandering alone through the dimly gaslit alleys of Paris at la fin de siècle, following the ghost of Sebastian Melmoth - (Oscar Wilde), hopelessly searching for a another chance to impress the world.



## E487 Lunatious

Earrings (Pair)

The essence of an unapologetically dark and nocturnal existence.



Model is wearing :

E487 Lunatious Earrings

P983 Descending Darkness Choker

Model & Photo : @Kattslade



# ALCHEMY



England · 1977

→○←  
♦AUTUMN 2024♦

P969  
**Wycca Queen**  
Necklace



The crowned triple moon of the mother goddess endowed with the principle seal of Lilith upon the onyx disc, flanked by the alchemical sigils for mercury and sulphur.

P979  
**Sterne Leben**  
Pendant

Stars of Life in gothic form, to shine in celestial darkness.



P978  
**Hex Coffin**  
Pendant

A shining, tangible spell of protection, defying the reaper and his dark spirit of mortality by the incessant tangle of positively baneful symbology.



P972  
**Witch Ankh (of Menouthis)**  
Necklace



Dedicated by the ancient temple of Menouthis to the greatest of the Egyptian goddesses, Isis. The temple was later destroyed by the Christian Romans, but the esse continues.

Model is wearing :

P974 Lunar Moth Necklace  
E483 The Trophy Earrings

Model & Photo : @Kattslade

WWW.ALCHEMYENGLAND.COM



# Neckwear

**P975**  
**Cross of**  
**The Dark Kiss**  
Necklace

The escutcheon dramatis from the coffin lid, in grave memory of the eternally extant beauty so beloved of the revenant Count Magistus.

**P967**  
**Hrafnhamerr**  
Necklace

From the poetry of the skalds, Huginn, Odin's 'thought' raven, raises Thor's Hamerr of storms in protection of the holder.

**P973**  
**Ankh**  
**of Ammon**  
Pendant

Alexander The Great's symbol of virility & rebirth, and homage to his pronounced father, the Greek Zeus-Ammon, king of gods.

**P980**  
**The Attic**  
Pendant

From total still and silence, suddenly, a rush and a clattering of leathern wings bursts out through the eves with malice aforethought.

**P966**  
**Vampire's Eye**  
Necklace

Those before you are callously scrutinised by the glazed and sightless eye of this insatiable revenant.

**P976**  
**Churchyard**  
Necklace

An evergreen entanglement of gothic elegance, percolating sorrow and affection for those gone before, and those who are yet to go...

**P971**  
**Eternal**  
**Peace**  
Necklace

Lilies symbolise the restored innocence and purity of the soul following a person's death, after the Virgin Mary's tomb was covered in white lilies. Supplied on chain and ribbon.

**P974**  
**Lunar Moth**  
Necklace

This actias, nocturnal and most rare of species, bears markings uncannily akin to the lunation of our influential moon.

**P968**  
**Vouivre**  
Necklace

In historic Burgundy, this legendary dragon dwelt amongst the trees and dark waters of the forest, shying from any young lovers they might encounter. Supplied on chain and ribbon.

**P977**  
**Luna Roost**  
Couples Necklace

Luna, the goddess and spirit of the moon, rises from the fonte noctis, the source and essence of the night - forever as one.

Two piece necklace. Can be worn together or seperately.

**P970**  
**Undying Homage**  
Couples Necklace

Communal acknowledgement of allegiance to the lord of Carpathia, and forever bound, body and soul, to his service.

Two piece necklace. Coffin with brass etched insert and Skeleton.



Model is wearing :

**P976** Churchyard Necklace

**A143** Churchyard Bracelet

**R252** Fafnirok Ring

**R234** Goddess Ring

**R241** Wild Black Rose Ring

Model & Photo : @Kattslade

## Kings

### R251 Resurrected

Ring - Sizes: L/N, Q/T, W/Y

The reanimated skeletal remains of a damned soul, sliding back up from the depths of the grave. Size Adjustable.



### R252 Fafnirok

Ring - Sizes: L/N, Q/T, W/Y

Breaking out through the coastal mists would be seen this terrifying dragon's head, high on the prow of a Viking longship, searing the destiny of the onlooker into their eyes. Size Adjustable.



### R222B Black Widow

Ring - Sizes: L, N, Q, T,

The monstrous, deadly predator is quiescent, unnervingly poised to strike and sink its fangs in whatever may sate its desire.

A giant spider, black pewter ring with a large red Austrian crystal body. Matching necklace and earrings available.



### A144 Hex Coffin

Bracelet (Size adjustable)

A shining, tangible spell of protection, defying the reaper and his dark spirit of mortality by the incessant tangle of positively baneful symbology.



## Armwear

### A143 Churchyard

Bracelet (Size adjustable)

An ivy strangled gothic cusp signifying sorrow and affection for those gone before, and those who are yet to go...





# Earrings



**E483  
The Trophy**  
Earrings (Pair)

A memento from the kill, and a sad and forlorn relic of the hapless victim.



**E480  
Hex Coffin**  
Earrings (Pair)

A shining, tangible spell of protection, defying the reaper and his dark spirit of mortality by the incessant tangle of positively baneful symbology.



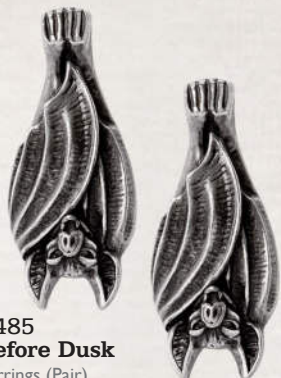
**E481  
Howl**  
Earring

A sullen, skulking lone wolf, sensitive to the nuanced force, awaits a full moon for freedom from restraint.

**E482  
Luna Roost**

Earring

Luna, the goddess and spirit of the moon, rises from the fonte noctis, the source and essence of the night.



**E485  
Before Dusk**  
Earrings (Pair)

The roosting menace will soon be awakened by the setting of the accursed sun, and the time to revel will once again come alive.



**E484  
Night-Time**  
Earrings (Pair)

Take the wings of darkness and veil yourself in a sinister cloak of nocturnal wickedness - let the night be yours...



**E479  
The Attic**

Earrings (Pair)

From total still and silence, suddenly, a rush and a clattering of leathern wings bursts out through the eves with malice aforethought.

**E478  
Conspiracy**

Earrings (Pair)

A dark shadow of movement stirs amongst the tops of the large oaks, as the conspiracy of ravens prepares to descend on the unsuspecting.



**ALCHEMY**  
England · 1977

© All designs are the exclusive copyright of Alchemy Carta Ltd. 2024.

Model is wearing :

A144 Hex Coffin Bracelet  
A143 Churchyard Bracelet  
R252 Fafnirok Ring  
R251 Resurrected Ring







◀ **P958**  
**Quoth The Raven**

Necklace

A herald from the welkin,  
in the depths of despair,  
dread the appalling spectre  
and its message from the  
underworld...

**P960 ▼**  
**The Undertaker**

Necklace

Beware the temptations of the  
golden demon, lest you be drawn  
deeper still into the depths of its  
eternal cask.



**P957 ▲**  
**Journey to Valhalla**

Pendant

The unrelenting courage of  
the Einherjar warrior,  
ensures a Valkyrie's escort  
to the great hall of the slain.



**P956**  
**Curse of Coronis**

Necklace

The duplicitous Apollo, lover and slayer  
of the beautiful and forsaken Coronis,  
will never be free of her raven avenger.

**P950**  
**Priestess of Ishtar**

Necklace

Venus, the star of Ishtar, is central to the firmament, as  
the Semetic Queen of Heaven, almighty goddess of  
the inseparable forces of love, sex,  
fertility, and war.



**P965**  
**Vampire Knife**

Pendant

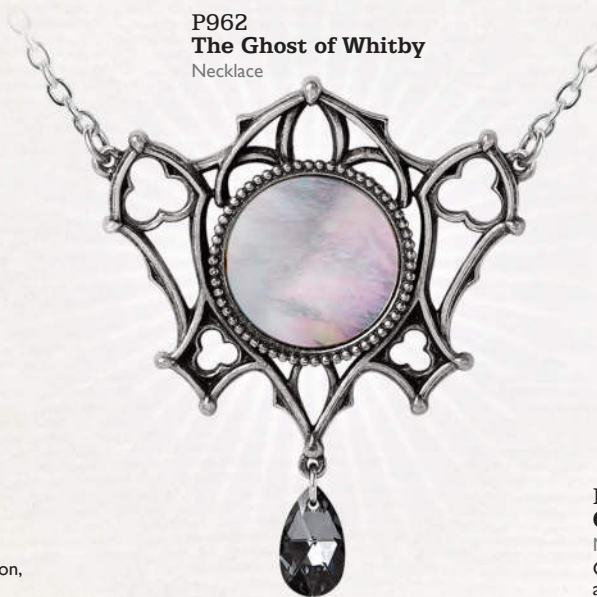
An 1830's variant  
of the frontiersman's  
Bowie fighting knife,  
used by vampire  
hunters such as  
Van Helsing,  
throughout central  
Europe during  
The Terror.



**P963**  
**Corn Witch**

Necklace

Following ancient agrarian tradition,  
the last sheaf of the harvest was  
fashioned by the community's most  
venerable woman, into the 'corn  
mother'; sure safeguard for the  
coming year's crops.



**P962**  
**The Ghost of Whitby**

Necklace

Alas, Henry Davell, the last Abbot  
of Whitby - gaze into his mirror  
and... nothing but the dark remains  
of a broken and tortured soul.



**P961**  
**Crux Corvis**

Necklace

Cross of the Raven - the grim  
and auspiciously canny portent  
waits patiently to savour the  
detritus from mankind's downfall.



◀ **P949**  
**Darken Heart**

Locket Necklace

"My Dark Love"; the clandestine  
attestation of a dangerous and tenebrous  
paramour - to harbour the likeness,  
within, of your revenant or otherwise,  
cicisbeo and leman.



**A140**  
**Priestess of Ishtar**

Bracelet (Size adjustable)

Almighty goddess of the inseparable  
forces of love, sex, fertility, and war.



**A141**  
**Blacksoul**

Bracelet (Size adjustable)

The black demon heart  
of a gothic seductress.



**A142**  
**Gothic Bat**

Bracelet (Size adjustable)

Creature of the night in full flight.

© All designs are the exclusive  
copyright of Alchemy Carta Ltd. 2024.

VISIT [WWW.ALCHEMYENGLAND.COM](http://WWW.ALCHEMYENGLAND.COM)  
FOR OUR FULL RANGE OF JEWELLERY & GIFTWARE.



→○←  
+ SPRING 2024 +



**R249  
Le Chat Noir**  
Ring - Sizes: L/N, Q/T, W/Y  
Sinuous muse of La Belle Epoque, stalking the rooftops and alleys of Bohemian Montmartre at the zenith of its decadent glory.



**R250  
Made of The Night**  
Ring - Sizes: L/N, Q/T, W/Y  
16th century term to describe a person of dark and sinister nature. One that might be associated with the dread and fear instilled by the ghostly raven.



**R248  
Devil Heart**  
Ring - Sizes: L/N, Q/T, W/Y  
Play with the dark Devil... Love, is sinful, naughty and oh, so much fun!



**E428B  
Black Widow**  
Earrings (Pair)  
The predatory pair, poised to sink their fangs.



**E476  
Priestess of Ishtar**  
Earrings (Pair)  
Almighty goddess of the inseparable forces of love, sex, fertility, and war.



**E475  
Danu**  
Earrings (Pair)  
Mother of the Earth and of all the gods.



E477A

E477B

E477C

E477G

E477R

E477

TEARS OF  
THE MOON



Earrings (Pair)

The wax and wane of tidal magic moving unseen through our deepest desires and fears as the Goddesses' tears cleave the night asunder.

**THE AMETHYST TEAR**

Spirituality, Creativity, and Transformation.

**THE DARK TEAR**

Intuition and the Birth of Aspiration.

**THE WOLF TEAR**

Connection, Rekindled Friendship and Community.

**THE GREEN TEAR**

Prosperity, Blessings and Abundance.

**THE HUNTER'S TEAR**

Fertility, Resilience and Self Preservation.



**P955  
Baroque Rose**

Necklace

Discovered in a former boudoir of Palais Cardinal, Paris, this jewel was said to have been given to the favourite lover of the powerful c17 French war minister, clergyman and notorious womaniser, Cardinal Richelieu. ‡

**P952  
Cross Of  
Baphomet**

Pendant

A Templar counter-stroke against the Inquisition, with the skull of Baphomet impaled on the cross of crucifixion.

**P951 ▶  
Cruxinomica**

Pendant

A darkly Lovecraftian rendition of the holy cross of the crusader.

**P953 ▶  
Hand Of Glory**

Pendant

The severed and mummified hand of an executed felon, used to assist a new offender in their furtive activity, together with the Hamsa eye of protection to ward off any evil threats.

**P432B ▲  
Black Widow**

Necklace

The deadly predator, poised to sink its irresistible fangs. ‡

**P940 ▲  
Lucrezia's Fix**

Necklace

An active woman's discreet solution to a troublesome 'encounter', as exemplified by the infamously licentious, incestuous and murderous c16 femme fatale noblewoman, Lucrezia Borgia.

**P936 ▶  
Drankh**

Pendant

The Egyptian ankh, venerable symbol of eternity, is subsumed by the irresistible energy of the medieval dragon.

**P947 ▲  
Unicursal  
Hex**

Pendant

Used in the c16th by philosophers and hermetic occultists to represent the 'figure of love', and by the infamous Aleister Crowley as the heavenly macrocosm, the entwining of the planetary and elemental forces.

**P954 ▲  
The Magical Phase**

Necklace

A pagan, Elven Star is inscribed within the triple moon and surrounded by the seven classical planets, to invoke all the energies of the cosmos.

**R246 ▶  
Nighthawk**

Wrap Ring (adjustable)  
A sinister, vampiric creature, thirsting for unsuspecting prey to carelessly cross their path.

**P948  
Pax**

Pendant

A runic depiction of the universal symbol of peace - Nuclear Disarmament.

**R247  
Howl At  
The Moon**

Wrap Ring (adjustable)

A ravenous, voracious beast of unstoppable force, pleading succour from their overpowering master. ‡



# AUTUMN WINTER COLLECTION

# ALCHEMY



England · 1977



## E472 ▲ Black Rose Droppers

Earrings (pair)

A bloom plucked from a devotional wreath of black roses, symbolising a dark and mysterious love.



## ▲ E470 Nightflight

Earrings (pair)

Flying bats, silent and motionless, await the final vestige of light - so, the raptors may play...

Model is wearing :

P955 Baroque Rose necklace;  
E472 Black Rose Droppers earrings

Model & photo: @Vesmedinia



## E466 ▲ Desire Moi

Earrings (pair)

Never underestimate the irresistible potency of Cupid's arrow. ‡

Matches P926 Desire Moi necklace.



## E471 ▲ Planchette

Earrings (pair)

Let the whispering voices from the Ouija guide you through your mortal existence.

Matches P937 Crowley's Spirit Board necklace.



## ▲ E474 Wiccan Moon

Earrings (pair)

The pearly full moon, invoking healing, occult protection and wealth. ‡  
Set with Mother-Of-Pearl moonstones.



## ▲ E473 Rabenschadel Schlenker

Earrings (pair)

A token of the great black bird, famous for it's prophetic powers and capable of foretelling death.





**P945**  
**Witches Cauldron**

Pendant

Mystically charmed, kettle black and stirring-up trouble again. A subtle expression of your uniqueness and remarkable talents.



**P937**  
**Crowley's Spirit Board**

Necklace

The enduring legacy of the The Beast; revealing the mysteries uncovered by Crowley's invocations. A miniature working Spirit or Ouija board if you prefer! Summon the spirits if you dare! Complete with instructions!



**P939**  
**Playing The Devil's Tune**

Pendant

Where dance is, there is the devil. (Saint John Chrysostom) - Cavort and make merry and to Hell with refrain!



**E467**  
**Pagan Dream Catcher**

Earrings (Pair)

Raven spirit and great protector, shedding but a single feather to float beneath a weightless moon. To ward off whispered evil on the cusp of midnight, ensnared below in a web of dreams.



**E468**  
**Feline Moondream**

Earring

Daydreams are for pussies, but the silent creatures of the night have serious ambitions and aspirations beyond even the comprehension of mere diurnal mortals.

**P943**  
**Key To Eternity**

Necklace

You've never entered this place before - dare you commit yourself? The most beautiful couples necklace featuring a padlock and key design. The key fits into the lock demonstrating your eternal love!



**P938**  
**My Forever Friend**

Necklace

You're never alone with your feline familiar.



**P942**  
**A Pact With A Prince**

Necklace

A fusion of magical sigils to entice and invoke the powers of the moon and angels of dark desire.



**P944**  
**Personal Baphomet**

Pendant

Feeling unknown, and you're all alone. Someone to hear your prayers, someone who cares, someone who's there.



**E469**  
**Lilith Earrings**

Earrings (Pair)

Eve, the ultimate, emancipated female of Biblical and Babylonian mythology, feared by all misogynists as the primal she-devil.





# ALCHEMY<sup>®</sup>™



England · 1977



Model is wearing :  
P937 Crowley's Spirit Board Necklace  
R237 Token of Love Ring  
R244 A Night with Goethe

Model & Photo : @Vesmedinia





Model is wearing :  
P925 Guardian Of Soma pendant  
Model & photo: @Vesmedinia



E460 ▲  
**Eve's Triquetra**  
Dropper Earrings (pair)  
The triple goddess, with a touch of female wilfulness.



E458 ▲  
**A Pact With A Prince**  
Dropper Earrings (pair)  
A fusion of magical sigils to invoke the powers of the moon and angels of dark desire.



E459 ▲  
**A Night With Goethe**  
Dropper Earrings (pair)  
Nocturnal stirrings, returning in search of a lost lover.

# ALCHEMY



England · 1977



E461 ▲  
**Dece's de Rocaille**  
Earwrap  
The decadent celebration of the exotic realm of death.





**P924 ▲  
Danu Pendant**  
Pendant  
Mother of the earth and  
of all the gods. ‡



**P930 ▲  
Seal Of Lucifer**  
Pendant  
The fallen angel, breaker of  
the 7th deadly sin.



**P925 ▲  
Guardian Of Soma**  
Pendant  
The Elixir of Life, preserved by  
the faithful alchemist's familiar. ‡



**P935 ▲  
Astro-Lunial Compass**  
Pendant  
A seer's instrument for foretelling  
the path to a heart's desire.



**P927 ▲  
Eternal Sleep**  
Pendant  
The fulfilment of a revenant's  
lasting peace.



**P929 ▲  
Eve's Triquetra**  
Pendant  
The triple goddess, with a touch of  
female wilfulness. ‡



**◀ P928  
Carpathian Rose**  
Necklace  
Where the darkest of romances  
prevail. ‡



**P926 ▶  
Desire Moi**  
Necklace  
Erotic love will overwhelm  
any victim of Cupid's arrow. ‡



# EARRINGS



**ALCHEMY**®



England · 1977

All earrings on this page are supplied on surgical steel earwires.



**E462 ▲  
Coeur Crane**

Dropper Earrings (pair)

The ancient bird of legend with beak that points the way to the immortal afterlife, though we all must first pass through the portal of the grave.



**E464 ▲  
Gothic Devotion Crosses**

Dropper Earrings (pair)

One of the most potent and widely used amulets in the world, the cross, here in the form of the Apostle's Cross, used everywhere in High Church Christian devotion.



**E463 ▲  
Wings Of Midnight**

Dropper Earrings (pair)

Taking flight from a subterranean lair, to whisper blessings on a phantom zephyr. So gracing the chosen ones of the dark goddess, with the wings of midnight. Black pewter.



**E465 ▲  
Passio Wings Of Love**

Dropper Earrings (pair)

Gothic love; virtue and corruption, ecstasy and torment, the angel meets the demon and hearts collide.



# NECKWEAR



**P931 ▲**  
**Petite Affair Du Coeur**

Pendant

A dark and Delphic romance of the heart; an assignation between two strange and exotic creatures from another place, amorous beneath the stars in the night sky. With red enamel & black crystal dropper. ‡



**P932 ▲**  
**Noose Around Your Neck**

Pendant

The most common method of execution from Mediaeval times, and a squalid and degrading end to the life of a mere mortal.



**P934 ▲**  
**Blacksoul Bijou**

Pendant

The black demon heart of a gothic seductress, nocturnally enticing her prey with ravishing enchantment. Antiqued pewter heart with black-enamelled fill and bat wings.



**P933 ▲**  
**Marie Antoinette**

Pendant

Flaunting the regal finesse of a doomed age. Guillotine blade bearing the last traces of aristocratic life; with fine crystal blood drop. ‡

Model is wearing :

**P933 Marie Antoinette pendant**  
**R219 Triple Goddess ring**

Model : **Dragonfly**  
[facebook.com/GuiDragonfly](https://www.facebook.com/GuiDragonfly)



# PENDANTS

▼ P920  
**Sombre Desir**  
Necklace  
Oh but to resist  
these wicked desires!

◀ P923  
**Templar's Bane**  
Pendant  
The sigil of Baphomet,  
suffusing rectitude  
with the essence  
of corruption.

◀ P919  
**Reflections of Poe**  
Necklace  
Inspiring Edgar Allan Poe,  
master of the macabre to  
give poetic voice to the raven.

◀ P921  
**Baphometica**  
Necklace  
Ancient goat skulled deity,  
whispering wisdom from the  
lost cults of antiquity. ‡

P922 ▶  
**Lunaeca**  
Necklace  
Spirit of the night, invoked  
by devotion and conjured  
from the Temple of Isis.

# RINGS

R242  
**Battle Ring**  
Ring  
The show of prowess  
for a battle won.  
Adjustable Sizes : T/Q - Y/W

R243  
**Last Embrace**  
Ring  
Fond memories of a  
once warm intimacy.  
Adjustable Sizes : N/L - T/Q - Y/W

R241  
**Wild Black Rose**  
Ring  
The rose of black romance  
will entrap its heart's desire  
and seduce them.  
Adjustable Sizes : N/L - T/Q

R245  
**Dragon's Lure**  
Ring  
Like a whispering shoulder devil  
or a witches familiar, this tortuous  
personal miniature dragon coils  
itself around your finger.  
Adjustable Sizes : N/L - T/Q - Y/W

R244  
**A Night With Goethe**  
Ring  
Nocturnal stirrings, returning from  
the grave in search of a lost lover,  
the creature roams.  
Adjustable Sizes : N/L - T/Q - Y/W

‡ Specified crystal colours are subject to availability and may be substituted.



# ALCHEMY



England · 1977

## EARRINGS



E457

### Cauchemar

Stud Earrings (Pair)

Nightmare - a soul eclipsed by the powers of darkness.



E450

### Pumpkin Skull

Stud Earrings (Pair)

Born from ancient Irish origin. The carved demonic face scares away evil spirits.



E449

### Baphomet Studs

Stud Earrings (Pair)

Inspired by Eliphas Levi's portrait of the goat-headed deity, and the reason for the Knights Templar's downfall.

Model is wearing :

P919 Reflections of Poe Necklace

R241 Wild Black Rose Ring

R243 Last Embrace Ring

R244 A Night with Goethe

Model & Photo : @Vesmedinia



# BAPHOMET

P906  
**Baphomet**  
Pendant



Éliphas Lévi's portrait of the goat-headed deity, and the reason for the Knights Templar's downfall.

R239  
**Baphomet**  
Ring



Inspired by Éliphas Lévi's portrait of the goat-headed deity, and the reason for the Knights Templar's downfall.  
(Sizes : N, Q, T, W, Y)



A138  
**Baphomet**  
Wrist-Strap

Éliphas Lévi's portrait of the goat-headed deity, and the reason for the Knights Templar's downfall. On adjustable leather strap.

Model is wearing -  
Baphomet Set : R239, A138 & P906

Model : **Dark Wolf**  
@Dark.Wolf.Model

Photo : **Les Songes De Lilou**  
@Les.Songes.De.Lilou





**P904  
Emerald Spiderling**  
Necklace

A smaller, but no less deadly predator, still poised to sink its irresistible fangs. ‡💎



**P916  
Infinity Dragon**  
Pendant

An underworld creature portraying the concept of infinity.



**P912  
Crucifaustan**  
Pendant

Purgatorial anguish for Faustus and his pact with the Devil.



**P918  
Mini Jormungand**  
Pendant

A discreetly talismanic ouroboros formed of the legendary Norse Midgard Serpent.



**P917  
Flight of Airus**  
Pendant

The distant shape of a profound wonder. New matching earrings also available (E442).



**P913  
Black Rose Enigma**  
Necklace

The dark rose of secrets, understood by you alone.



**P905  
Bouquet of Love**  
Necklace

A passionate symbol of devotion from the heart of a dark one. ‡💎



**P900  
Batheart -  
The Vampire's Kiss**  
Necklace

The silent, almost imperceptible kiss of the vampire. ‡💎



**P911  
Sin Horned God**  
Pendant

The male counterpart and consort to the wiccan's female Triple Goddess.



**P907  
Mon Amour De Soubise**  
Necklace

'My Love of Soubise' - a feature betraying an illicit affaire at the prince's palace. ‡💎

**NECKWEAR**





Model is wearing -

E437R Empyrean Tear Earrings  
P915 The Confluence of  
Opposites Necklace

Model : **La Esmeralda**  
@Alternative.Model.La.Esmeralda

Photo : **Silver Pearl Photography**  
[www.silverpearlphotography.blogspot.com](http://www.silverpearlphotography.blogspot.com)

**P915**  
Necklace



# THE CONFLUENCE OF OPPOSITES

The urgent, passionate union of divergent beasts, forging an unlikely bond of eternal ardour, energy and spiritual affinity. ‡





Model is wearing -  
P895 Feline Felicity pendant.

Model : **Mahafsoun**  
[www.facebook.com/MahafsounArt](http://www.facebook.com/MahafsounArt)

**P884 ▶  
Love Cat**

Pendant  
Feline love is only bestowed  
upon the most mysteriously  
exceptional individual.  
With translucent smoky  
enamel.



▲  
**P889  
Sacred Cat Vanitas**  
Pendant

The face of the imperious  
feline deity preening itself  
to perfection, from either  
side projecting its aura of  
confident supremacy.  
One side is a mirror, while  
the other is the face of the  
Sacred Cat.



▲  
**P895  
Feline Felicity**  
Pendant

Silent, stealthy and  
omnipresent, your ailuros  
companion confidently  
reflects upon your destiny.



▲  
**P879  
Minnaloushe**  
Necklace

Minnaloushe creeps and stares,  
lifting his changing eyes to the  
changing moon. ‡







Model is wearing -  
P873 Pagan Dream Catcher  
necklace.  
Model : **Dragonfly**  
facebook.com/GuiDragonfly



P894 ▲  
**Guirlande d'Amour**  
Necklace  
"I am your rose, But my love is dark,  
Forsake me not, Lest my thorns do harm".  
On black ribbon, with teardrop Austrian  
crystal. ‡ ✦



P896 ▲  
**Blacksoul**  
Necklace  
The black demon heart of a gothic  
seductress, nocturnally enticing her  
prey with ravishing enchantment.  
With black enamelled heart.

**ALCHEMY**  
England · 1977

◀P873  
**Pagan Dream Catcher**  
Necklace  
With a pentagram woven into  
its web, the dream snare deflects  
evil influences and misfortune. ‡ ✦





**P871  
Athame**  
Pendant

The ceremonial, magic ritual dagger of Wicca. ‡



**P881  
RIP Rose**  
Pendant

Dark and deadly passion from beyond the grave.



**P876  
Ravenette**  
Necklace

The darkened quietude of sorrow. New matching ring available, R232.



**P870  
The Black Goddess**  
Necklace

The Triple Moon Goddess, with an oblique perspective. ‡



**P874  
Tercia Serpent**  
Necklace

Three coiled serpent symbolising the pagan Rule of Three. ‡



**P878  
Elven Star**  
Pendant

The Wiccan symbol of the septagram and the sacred Faery tradition.



**P886 ▶  
Remains**  
Pendant

The hard featureless receptacle of the soul, stripped down from its mortal vanity.



**P888 ▶  
Mammon Of The Deep**  
Pendant

A rapacious treasure-hoarding demon from the watery abyss, guardian of immeasurable wealth, surrendered by the forlorn victims of the cruel seas. With Hematine cabochon. ‡





Model is wearing :  
**P855 Witches Heart** pendant.  
 Model : **Dragonfly**  
 facebook.com/GuiDragonfly



**P855 Witches Heart**  
 Pendant

Dark practices from the mists of antiquity, perhaps to scorn a former lover?...With black pewter heart & chained pewter piercing nail.



**P769 Voodoo Doll**  
 Pendant

Of ancient European origin, the traditional way to destroy a witch's power; with black cord noose & chained pewter piercing pin.



**P864 Rose Briar**  
 Necklace

A grave but beautiful garland of arcane mystique.



**P860 Petit Ouija**  
 Pendant

Peep into the underworld with a talking board. Set with a red taxidermal eye.



**P766 Planchette**  
 Pendant

The spiritualist's device for communicating with the dead... ICU. Set with a realistic taxidermal eye.



**P853 Sophia Serpent**  
 Necklace

The Ouroboros, ancient symbol of eternity, rebirth and unity. ‡ ♦



**P847  
Gorgon's Eye**

Necklace

The very essence of the gorgon  
Stheno's dreaded evil eye.  
With green Austrian crystal  
eye. ‡ ✦

**P848  
Wounded By Love**

Necklace

The naked heart of an innocent,  
pierced by ill-fated romance. With  
translucent red enamel & black  
acrylic rose.

**P868  
Infinite Love**

Necklace

'Amor Aeternus'  
Eternal Love and  
the mysterious suitor.

Model is wearing -

**P868** Infinite Love Necklace  
**E425** Love Bats Earrings

Model : **La Esmeralda**  
@Alternative.Model.La.Esmeralda

Photo : **Silver Pearl Photography**  
[www.silverpearlphotography.blogspot.com](http://www.silverpearlphotography.blogspot.com)

**P810  
Triple Goddess**

Choker

The pearly full moon flanked by  
the waxing and waning crescents  
invokes healing, occult protection  
and wealth. With mother-of-pearl  
& Austrian crystals. ‡ ✦

**P786  
Wiccan  
Elemental  
Pentacle**

Necklace

The five elements  
conjoined within  
the circle of the  
universe. ‡ ✦

**P845  
Goddess**

Pendant

Combining fire, water,  
earth, air and spirit with  
Wicca's triple moon  
and a crystal to focus  
your magical  
energies. With  
Austrian crystal  
dropper. ‡ ✦



# FRIENDSHIP NECKLACES



**P851  
Darkling Heart**  
Couples Friendship  
Pendants

Two dragon-wing pendants, forming a perfect heart frame when held together. In high contrast black & silver finishes.



**P834  
Coeur Crâne**  
Couples Raven  
Promise Necklace

Two complementing raven's skulls; when together they're a discreet heart of bone - when apart, a covert token of a netherworld affair. Sold as two separate necklaces.

**P811  
Draconic Tryst**  
Sweetheart / Couples /  
Friendship Necklace

Consorts of darkness collude and entwine with adamantite embrace, to belong to one another for eternity. An interlocking, separable, two-tone double necklace.

Magnetic catch fastening.



Model : **Honey Hulala**  
@honey\_hulala

Model : **Dorian Dane**  
@dorian.dane



# ROSE GARDEN

*Alchemy's Nocturnal Bouquet*



**P843**  
**New Romance**  
Pendant

The new moon brings with it a promise of new love. With black acrylic rose.



**P844**  
**Færie Glade**  
Necklace

The ephemeral delicacy of a garden fairy reflecting the short but sweet life of a black rose. With black acrylic rose.



**P839**  
**Love Never Dies**  
Necklace

Sending love from the grave... With black acrylic rose.



Model is wearing :  
P843 New Romance pendant.



Model is wearing :  
P839 Love Never Dies necklace.

Model & Photography :  
**Magda Corvinus**  
@magda\_corvinus





Model is wearing :  
P818 Kraken necklace  
R221 Kraken ring

Model : **Lara Mauve** - @lara\_mauve  
Photo : **Annie Bertram** - [www.anniebertram.com](http://www.anniebertram.com)





**P121  
Gothic Bat**

Necklace

Creature of the night in full flight;  
on split chain.



**P807**

**White Hart, Black Rose**

Necklace

The hart's skull and a Black Rose is the spell  
to invoke arcane and passionate encounters.  
An antiqued pewter stag's skull with a rose  
garland about its horns, the centre one being  
of black acrylic.

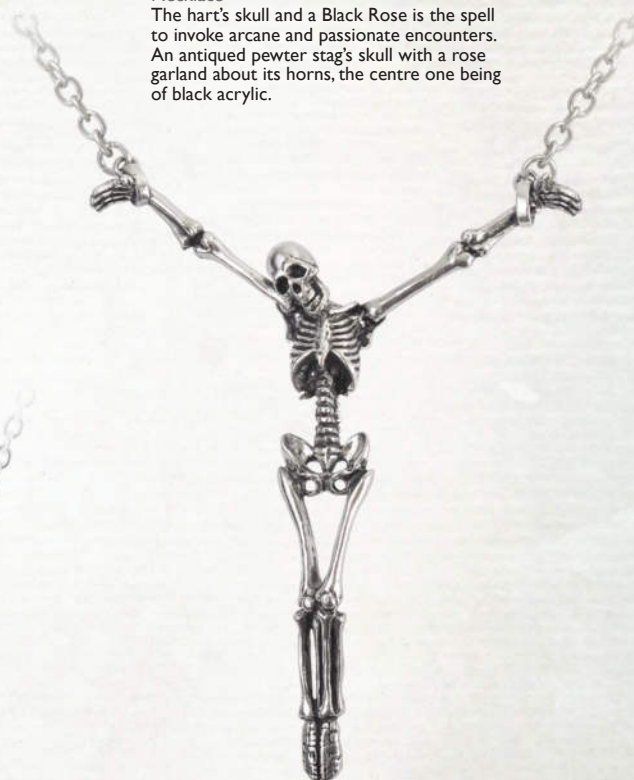


**P758**

**Black Rosifix**

Pendant

The tangled cross of deep  
devotion, passion and  
eternal mystery. ‡ ♦



**P722**

**Alter Orbis**

Necklace

A pitifully brutal end to mortal  
existence, and an exquisite entry  
into the "Other World".



R221



E409



**P818**

**Kraken**

Necklace

You strain to escape the feel of the  
monstrous tentacles writhing to take  
a stranglehold on your neck...  
Set with a large, Volcano effect,  
pear-shaped Austrian crystal. ‡ ♦





**P229**  
**Wolverine Moon**  
Pendant  
Beware the full moon and the silver dagger; with two moonstones. ‡



**P832**  
**Eye Of The Dragon**  
Necklace  
The penetrating stare of a fire-eyed lacertilia of chaos. With a vivid green Austrian crystal eye. ‡



**P235**  
**Dante's Hex**  
Pendant  
Mediaeval style pentagram.



**P432**  
**Emerald venom**  
Necklace  
The deadly predator, poised to sink its irresistible fangs; with two Austrian crystals. ‡



**P797**  
**Maloik:**  
**Sign of The Horns: Maschio**  
Pendant  
The 'Sign of the Horns' ancient amuletic protection against bad luck and the evil eye and the classic salute in rock cultures.



**P503B**  
**Queen Of The Night**  
Necklace  
The antipathy of the ancient Iranian prophet sage Zoroaster's 'Moral Order'. A flamboyant Austrian crystal-laden baroque extravagance representing opulence and decadence. ‡



**P792**  
**Affaire du Coeur**  
Pendant  
A dark and Delphic romance of the heart between two strange and exotic creatures. ‡  
With matching earrings, E414.







▲  
**P346**  
**Anguis Aeternus**

Pendant

The Dragon of Eternity sustains  
the faceted vitriol crystal of life;  
Austrian crystal. ‡



▲  
**P607**  
**Sucre Vert Absinthe Spoon**

Pendant

Green Sugar: a miniature wearable token  
of a secret life; an Alchemy absinthe spoon,  
signifying an existence dedicated to hedonistic  
pleasure and sublime aestheticism; set with  
large, limpid Emerald green Austrian crystal.  
‡



Model is wearing -

**P432** Emerald Venom necklace  
**R222** Emerald Venom ring

Model : **Obsidian Kerttu**  
facebook.com/ObsidianKerttuOfficial/  
Photo : **Nevena Mitrovic**  
instagram.com/nena.mit/





**P447  
Blood Moon**  
Pendant  
A skein of bats flitters about  
this deep and sinister portent.



**P721  
The Blood  
Rose Heart**  
Necklace  
A dark romance secretly  
blossoms from the life blood  
of a once broken heart; with  
Austrian crystals set beneath  
the red enamel blood. ‡ ♦



**ULFP20  
Devil Heart**  
Pendant  
Love is sinful, naughty and oh, so  
much fun! With translucent red  
enamelled heart & Austrian  
crystal highlights. ‡ ♦



**P746  
Blood Heart**  
Necklace  
The female corsair, amorous she-wolf  
and destroyer of men's hearts;  
red enamelled heart with two  
acrylic roses on black ribbon.



**ULFP1  
Swallow  
Heart**  
Necklace  
Two tattoo-style swallows  
holding a red crystal heart;  
on fine trace chain. ‡ ♦



**P816  
Cat Sith**  
Pendant  
Superstition and folklore pervade  
the mysterious black cat, known  
in Celtic mythology as the fairy  
Cat Sith. Black pewter pendant  
inset with Austrian Siam  
crystal eyes. ‡ ♦



**P823  
Nocte Amor**  
Choker  
Wings of the night, guiding the  
wearer to a dark haven of passion.  
On a 10mm wide, faux leather choker.



**P695  
The Romance  
Of The Black Rose**  
Pendant  
The most desired and most  
unattainable bloom known to  
man - an impossible dream!  
On 18" chain.





Model is wearing -  
P721 The Blood Rose Heart necklace  
R134 Betrothal ring

Model : **Obsidian Kerttu**  
[facebook.com/ObsidianKerttuOfficial/](https://facebook.com/ObsidianKerttuOfficial/)  
Photo : **Nevena Mitrovic**  
[instagram.com/nena.mit/](https://instagram.com/nena.mit/)





**P827 ▲  
Eye Of Providence**

Pendant

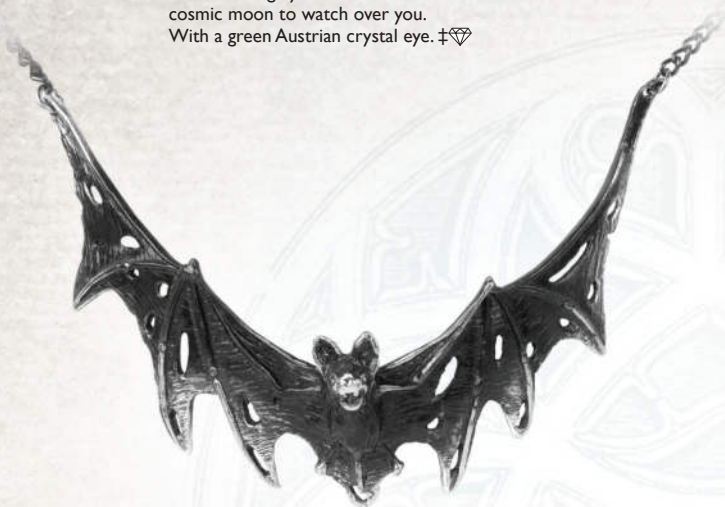
The all-seeing eye of God and the cosmic moon to watch over you. With a green Austrian crystal eye. ‡ ♦



**P221 ►  
Ankh Of The Dead**

Necklace

Vampyre's talisman of eternity, incorporating its secret life-blood blade inside the symbolic scabbard; in antique silver-coloured pewter.



**P765 ▲  
Villa Diodati**

Necklace

Flitting through the silent candlelit darkness of the lakeside manor, the creature gives rise to the birth of Dracula.



**P700 ▲  
Bacchanal Rose**

Necklace

A sumptuous necklace with a romantic motif hiding, or revealing, a secret libertine passion for wine and sensual pleasures; with black acrylic roses & Austrian crystals. ‡ ♦



E333



**◄P193  
Black Raven**

Pendant

In two-tone, blackened pewter with polished mount. The Raven, the C. 20th symbol of the undead; on 27" ball chain.



**P697 ▲  
Ravenine**

Pendant

The raven, an ancient symbol of protection, information and dark secrets. On 18" chain.



**P752 ▲  
Rabeschadel Kleine**

Pendant

A token of the great black bird, famous for its prophetic powers and capable of foretelling death.



Model is wearing :

P700 Bacchanal Rose necklace.

Model : **Elaine Valerie**

Photo : **Annie Bertram** - [www.anniebertram.com](http://www.anniebertram.com)



**P808**  
**Awaiting**  
**The Eventide**  
Pendant

A roosting vamp, silent and motionless, hungrily awaits the dusk.



**P158**  
**Vampyr**  
Pendant

Vision of the nocturnal nightmare.



**P597**  
**Om Strygia**  
Pendant

A vampire bat of Balkan severity and proportions.



**P598**  
**Kiss The Night**  
Pendant

Discreetly tokening the owner's alternative tendencies.



**P600**  
**La Nuit**  
Pendant

A crystal luxuriance on the wings of the night; with Austrian teardrop crystal. ‡





**P188 ▲**  
**Anguistralobe**

Pendant  
Working miniature of an C18th instrument to measure the direct path of destiny between specified heavenly bodies; pewter and brass.

**P751 ▶**  
**Geistalon**

Pendant  
Fear from the darkness - the thundering phantom of an armoured cataphract unicorn.



**P58 ▶**  
**Pentagram**

Pendant  
Quintessential forces of man.

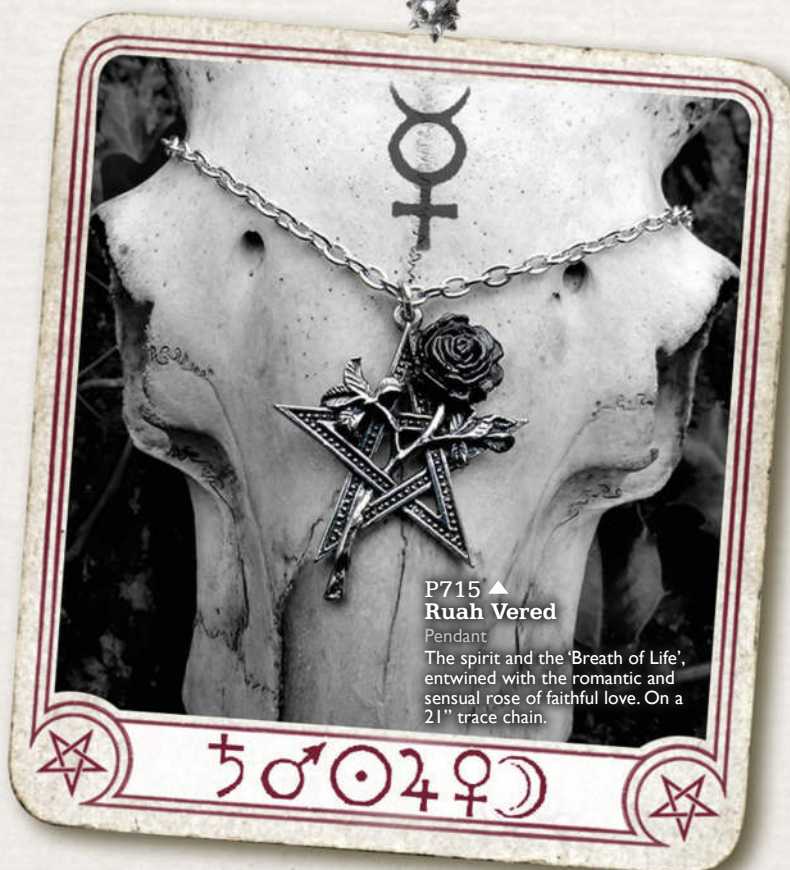


**P365 ▲**  
**Crystal Pentagram**

Pendant  
Austrian crystal-set, magical star of protection. ‡ ♦

**P805 ▲**  
**Red Curse**

Pendant  
A powerful Evil Eye amulet to ward-off unmindful, malevolent curses; set with red taxidermal eye.



**P715 ▲**  
**Ruah Vered**

Pendant  
The spirit and the 'Breath of Life', entwined with the romantic and sensual rose of faithful love. On a 21" trace chain.



**P780 ▲**  
**Hand Of Macbeth**

Pendant  
Beware the seduction of ultimate power... With black onyx cabochon.

**P183 ▲**  
**Nosferatu's Rest**

Pendant  
Encapsulated in a smoke glazed pewter coffin, the Prince is viewed in his matinal retreat.

**P801 ▲**  
**Santiago Cross**

Pendant  
The charge of the 12th century knights, The Order of St. James of the Sword; with hematine cabochon. ‡





**P233**  
**Cult Of Aset**  
 Pendant  
 Translucent red enameled solar disk, horned and throned, of the great Egyptian and universal Goddess.



**P26**  
**The Alchemist**  
 Pendant  
 Classic skull of the philosopher; black rose two-tone pewter.



**P190**  
**The Lost Soul**  
 Pendant  
 The pitiful tortured remains of a hapless nobody.



**P417**  
**Drakonkreuz**  
 Pendant  
 Symbol of the obscure, medieval, mystic order and holders of arcane and ancient magical powers; with Austrian crystals. †



**P323**  
**The Whitby Wyrn**  
 Pendant  
 The legendary North Yorkshire servant of the Antichrist rampant.



**P829**  
**Dragon's Lure**  
 Necklace  
 A twisting saurian familiar, willing it's confidant to a wayward and dissolute lifestyle. On a continuous snake chain, fastened by a magnetic catch under the dragon's head.



Magnetic catch fastening. Used on bangle and necklace





**P908 ▲  
Mithras**

Pendant

The cult mystery's bull's horns and crescent moon of the Roman underworld.



**P910 ▲  
Drakkar Hammer**

Pendant

From the great Viking raiding parties' longships.



**P625 ▲  
Dragon Skull**

Pendant

Primitive ferocity unleashed.



**P338 ▲  
Bindrune Hammer**

Pendant

Viking Thor's Hammer, with runes commanding energy, courage, virility and conquest.



**P774 ▲  
Jormungand**

Neck Thong

The Norse legend of Jörmungandr, the 'Midgard' or World Serpent is the greatest ouroboros.



**P728 ▲  
Amber Dragon Thorhammer**

Pendant

A classic, ornate and highly intricate pagan amulet of power and protection, fit for a high ranking Saxon or Viking leader, set with polished, translucent, 30 million year old amber. On a 21" trace chain. ‡



**P788 ▲  
Wolf Macht**

Pendant

The symbol of power from the wolf's fang is understood by all. With black pewter 'tooth'.



**P833 ▲  
Dark Wolf**

Pendant

The ferocity emanated by this feral beast is tangible. Antique pewter pendant on a black curb chain.



**P11 ▲  
Double Axe**

Pendant

Barbarian warlord's professional trade tool.





VAP2 ▲  
**Mjollnir**  
 Pendant  
 Thor's magical war-hammer.



P687 ▲  
**Helm Of Awe  
 Ravenskull**  
 Neck Thong  
 This raven's skull has been  
 engraved upon its head with  
 the Icelandic stave symbol,  
 'Aegishjalmur'.  
 On black square leather thong.



P696 ▲  
**Thor's  
 Hammer Amulet**  
 Pendant  
 An amulet to Thor, to wear for  
 protection, strength, healing and  
 fertility. On 18" chain.



Model is wearing -  
**P774** Jormungand neck thong  
**ABR5** Norsebraid beard & hair beads

Model: **Thorben**  
 @her\_brother\_thorben  
 Photo: **Silver Pearl Photography**





**P850  
Einardolk**

Pendant

Viking talisman of self preservation.  
Two-tone pewter with black  
cabochon 'eye', on black curb chain.



**P893  
Niu Heimar Vegvisir**

Pendant

The Nordic stave wayfinder for the  
9 Realms of Asgard, the Viking World.  
With etched bronze stave insert.

Model is wearing -  
**P850** Einardolk pendant  
Model: **Dark Wolf**  
@Dark.Wolf.Model  
Photo: **Les Songes De Lilou**  
@Les.Songes.De.Lilou





**P875  
Aegishjalmur**

Pendant

The Viking rune stave, a powerful, magical, Norse protection amulet.



**P898  
Volvan  
Ravenskull**

Pendant

The morbid media of a Seidr, the wand-carrier or seer of the Vikings, consulted on matters of fertility and battle, even by the gods themselves.



**P617  
Black Knight's Cross**

Pendant

Awarded for dastardly deeds; with trans black enamel, on black curb chain.



**P775  
Black Star**

Pendant

Supernatural forces leech from the Stygian pentacle; with black enamel.



**P730  
Bushido**

Pendant

The seven virtues of the Samurai warrior, engraved down the length of the Katana's blade.



**P618  
Osbourne's Cross**

Pendant

Sign of a priest of darkness; with black enamel.



**ULP9  
Tattoo Gun**

Pendant

Fully 3-dimensional 2-tone tattoo gun. With engraved, copper-plated scroll on antique silver finish chain.



**P296  
Reaper's Arms**

Pendant

Harvester of Sorrow and the badge of fate.





Model is wearing -

P792 Affaire du Coeur pendant

E414 Affaire du Coeur earring droppers

Model: **Mahafsoun**

facebook.com/MahafsounArt

## EARRINGS



**E414**

**Affaire du Coeur**

Dropper Earrings (pair)

The flanking skulls betray a dark

and Delphic romance. ‡ ✦

With translucent deep blue enamel  
& Austrian jet crystals.



**E437B**



**E437R**

**E437C**

**Empyrean Tear**

Dropper Earrings (pair)

Tears of grief from the eye

of God, shed for humanity

as He looks down upon us

from the Heavens.

Available in Crystal AB (E437C),

Jet (E437B) or Siam (E437R)

Austrian crystals. ‡ ✦





**E443  
Blacksoul Droppers**  
Dropper Earrings (pair)  
The black demon heart of a gothic seductress.



**E440  
Jormungand**  
Dropper Earrings (pair)  
The discreetly talismanic ouroboris, emblems of wholeness, formed of the legendary Norse Midgard Serpent.



**E442  
Flight of Airus**  
Dropper Earrings (pair)  
The distant shape of a profound wonder.



**E441  
Tercia Serpent**  
Dropper Earrings (pair)  
Symbolising the wiccan rule of three. ‡ ♦



**E425  
Love Bats**  
Dropper Earrings (pair)  
Gothic amour from the night time's darkest creatures. ‡ ♦



**E433  
Witches Heart**  
Stud Earrings (pair)  
Stick the heart and cast a spell for silent retribution. With chained pin.



**E431  
Sterne Leben**  
Dropper Earrings (pair)  
Stars of Life in gothic form, to shine in celestial darkness. With Austrian Jet crystals. ‡ ♦



**E432  
RIP Rose**  
Dropper Earrings (pair)  
Dark and deadly passion from beyond the grave.



**E430  
Goddess**  
Dropper Earrings (pair)  
The Triple Goddess of Wicca is represented with the elemental, full moon pentagram at its heart.



**E421  
The Romance Of  
The Black Rose**  
Dropper Earrings (pair)  
An impossible dream...



**E429  
Kiss The Night**  
Dropper Earrings (pair)  
Silent nocturnal sentinels, ever present at your side.



**E428  
Emerald Venom**  
Dropper Earrings (pair)  
The predatory pair, poised to sink their fangs. ‡ ♦





**E409  
Kraken**

Stud Earrings (pair)  
The monster's writhing tentacle holds its exotically subterranean gem. With volcano effect Austrian dropper. ‡



**ULFE22  
Devil Heart**

Stud Earrings (pair)  
Love, is sinful, naughty and oh, so much fun! With translucent red enameled heart & Austrian crystal highlights. ‡



**E378  
Hand Of Macbeth**

Dropper Earrings (pair)  
Beware the seduction of ultimate power...With Austrian jet hematite crystals. ‡



**E333  
Black Raven**

Dropper Earrings (pair)  
Dark and sultry companions make sure your admirers do not underestimate your character.



**E364  
Deadskull**

Dropper Earrings (pair)  
The desiccated remains of a former human being; pewter skulls suspended by fine chain.



**E365  
Wounded Love**

Stud Earrings (pair)  
A gaping hole is left where there was once a dark and mysterious romance; black pewter rose stud with heart dropper.



**E9  
Skeleton**

Dropper Earrings (pair)  
It all comes down to this. The last remains of master and slave alike.



**E373  
Awaiting  
The Eventide**

Dropper Earrings (pair)  
Roosting vamps, silent and motionless, await the final vestige of light - so, the raptors may play...



**E372  
Ankh Of Osiris**

Dropper Earrings (pair)  
The Egyptian god Osiris, bequeaths the 'Breath Of Life' upon those to be blessed with immortality. ‡



**E403  
The Sophia Serpent**

Stud Earrings (pair)  
The Ouroboros, ancient Gnostic symbol of eternity, rebirth and unity. Set with Austrian crystal eyes. ‡



**E310  
Marie Antoinette**

Stud Earrings (pair)  
Miniature guillotine blades, bearing the last traces of aristocratic life; with Austrian Siam crystals. ‡





**E402**  
**Ruah Vered**  
 Dropper Earrings (pair)  
 The spirit and the 'Breath of Life',  
 entwined with the romantic and  
 sensual rose of faithful love.



**E396**  
**Ouija Planchette**  
 Stud Earrings (pair)  
 The spiritualist's device for  
 communicating with the dead...  
 ICU! Set with a realistic  
 taxidermal eye.



**E395**  
**Black Star**  
 Dropper Earrings (pair)  
 Supernatural forces leech  
 from the Stygian pentacle.



Model is wearing -  
**E395** Black Star dropper earrings  
**P715** Ruah Vered pendant  
**P775** Black Star pendant

Model : **Obsidian Kerttu**  
[facebook.com/ObsidianKerttuOfficial/](https://facebook.com/ObsidianKerttuOfficial/)  
 Photo : **Nevena Mitrovic**  
[instagram.com/nena.mit/](https://instagram.com/nena.mit/)



# EAR-WRAPPS



E274R

## The Dragon's Lure

Faux Stretcher Ear-Wrap (right)

Like a whispering shoulder devil, or a witch's familiar, this dragon, piercing through the earlobe, tempts the wearer into acts of shameful depravity.

Model is wearing :

E274R Dragon's Lure ear wrap

P829 Dragon's Lure necklace

A124 Dragon's Lure hinged bangle

Model : **Mahafsoun**

[facebook.com/MahafsounArt](https://facebook.com/MahafsounArt)

**ALCHEMY**  
  
 England • 1977



**E355**  
**Raven Ear-Wing**

Stud Ear-Wrap (left)

Ready to impart its supernatural intelligence to its master, the black raven raffishly embraces the ear of its owner. Fastened by a surgical steel ear-post.



Model is wearing :  
E355 Raven Ear-Wing ear wrap  
Model : **Mahafsoun**  
[facebook.com/MahafsounArt](https://www.facebook.com/MahafsounArt)



**E461**  
**Dece's de Rocaille**

Earwrap (right)

The decadent celebration of the exotic realm of death.



**E436**  
**Jormungand**

Ear-Wrap (left)

The Norse legend of Jörmungandr, the 'Midgard' or World Serpent is the greatest ouroboros... unfurled.



**E434**  
**Khthonis**

Ear-Wrap (left)

A particularly noxious, multi-headed serpent from the realms of the Greek underworld.

**E410**  
**Wild Black Rose**

Stud Ear-Wrap (left)

The rose of black romance will entrap its hearts desire and seduce them. With large black acrylic rose.







**E376 ▲  
A Night With Goethe**

Stud Ear-Wrap (left)

Nocturnal stirrings, returning from the grave in search of a lost lover, the creature roams.



**E330 ►  
Crystal Dragon**

Faux Stretcher Ear-Wrap (right)

With dramatically outstretched wings, the writhing dragon flaunts its Austrian crystal dropper. ‡

**E412 ▼  
Ostrogoth Dragon**

Stud Ear-Wrap (right)

The saw-backed, spine-faced 'raptilion', a long feared monster of dark legend.



Model is wearing -

E412 Ostrogoth Dragon ear wrap

P832 Eye Of The Dragon necklace

Model : **Elisanth** - [www.elisanth.com](http://www.elisanth.com)

Photo : **Zatsepin Alex** - [www.zatsepin-alex.com](http://www.zatsepin-alex.com)





## ARBOREUS ELF EAR WRAPS

### ◀ E390R & E390L Arboreus

Stud Ear-Wrap (right & left)  
An elf's ear of swirling, Victorian,  
verdant flourishes. Available in  
both right & left ear versions.

Model is wearing : E390R Arboreus Ear Wrap

Model : **Melanie K**

instagram.com/frankensteins\_cat/

Photo : **Travis Lilley**

instagram.com/travislilleyphoto/



## E446 ELVYN ELF EAR WRAPS

The quintessential manifestation of one  
of the most magical and ancient of beings.  
‡ ♦

E446 R  
Black  
Ear-Wrap  
Right

E446 L  
Black  
Ear-Wrap  
Left



## THE DRAGON'S LURE

### 1 E274R The Dragon's Lure

Faux Stretcher Ear-Wrap (right)  
Like a whispering shoulder devil,  
or a witch's familiar, this dragon,  
piercing through the earlobe,  
tempts the wearer into acts of  
shameful depravity.

### 2 E274B Dragon's Lure Black

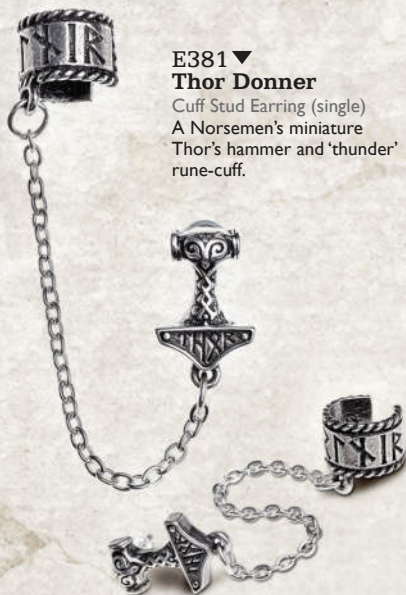
Faux Stretcher Ear-Wrap (right)  
Noir version of the now  
immortal dragon wrap.

### 3 E274L Dragon's Lure Left

Faux Stretcher Ear-Wrap (left)  
A matching, left-ear version  
of the infamous dragon  
wrap.







**E381 ▼  
Thor Donner**  
Cuff Stud Earring (single)  
A Norsemen's miniature  
Thor's hammer and 'thunder'  
rune-cuff.

## CUFF STUDS



**E382  
Rosa Nocta**  
Cuff Stud Earring (single)  
Conjuring the amorous  
magical properties of a  
combined pentagram and  
a black rose.

**E349 ►  
Uncle Albert's  
Timepiece**  
Cuff Stud Earring (single)  
The perfect miniature, 13-hour  
Lunar time fob watch and its  
accoutrements from the Victorian  
era; two-tone copper & pewter  
with glass imitation watch face.



**E280 ▲  
Impalare Cross**  
Faux Stretcher (single)  
Pierced by the enduring symbol  
of sacrifice; black-enamelled  
cross piercing the earlobe, with  
surgical steel post.

## FAUX EAR STRETCHERS



**E320 ▲  
Tomb Skull Horn**  
Faux Stretcher (single)  
7mm curved horn with plain  
skull end.



**E257 ▲  
Cesare's Veto**  
Faux Stretcher (single)  
The Cesare Borgia's Florentine  
solution to all political problems.  
With Austrian crystal. ‡ ♦

## SINGLE EARRINGS



**E256  
Hang Man's Noose**  
Single Stud Earring  
The most squalid and degrading  
of ends to the life of a mortal.

**E357 ►  
Bushido**  
Single Dropper  
The seven virtues of the samurai  
warrior, engraved down the  
length of the katana's blade.





# STUD PAIRS



**E447 ▲  
Ring O' Roses**  
Stud Earrings (pair)  
Symbolising a dark  
and mysterious love.



**E444 ▼  
Blacksoul Studs**  
Earrings Studs (pair)



The black demon heart  
of a gothic seductress.



**E342 ▲  
Mortuarium**  
Stud Earrings (pair)  
Skulls, staring deeply into the  
oblivion of a long-past mortal  
existence.



**E394 ▲  
Viennese Nights**  
Stud Earrings (pair)  
Creatures of the night in Europe's  
fabulous den of iniquity. ‡ ♦



**E422 ▲  
Demoneye**  
Stud Earrings (pair)  
The creature from which  
these ocular sensors belong  
is not to be crossed.



**E401 ▲  
Triple Goddess**  
Stud Earrings (pair)  
The pearly full moon, invoking  
healing, occult protection and wealth. ‡



**E353 ▲  
Industrilobe**  
Stud Earrings (Pair)  
The quintessential cogwheel,  
personifying dynamic industrial  
and intellectual progress.



**E164 ▲  
Pentagram Studs**  
Stud Earrings (pair)  
Miniature pentagrams for  
magical discretion.



**E339 ▲  
Black Rose Studs**  
Stud Earrings (pair)  
The alchemical mystery personified  
by this impossibly rare flower.



**E186 ▲  
Batstuds**  
Stud Earrings (pair)  
Discreet aural accents  
for the nocturnal hunter.



**E359 ▲  
Rabeschadel**  
Stud Earrings (pair)  
The great black bird, famous  
for its prophetic powers, being  
Odin's messengers and capable  
of foretelling death.



**E384 ▲  
Thor Hammer Studs**  
Stud Earrings (pair)  
A Norseman jewel-smith's  
precision, miniature Thor's  
hammer.



**E406 ▲  
Sacred Cat**  
Stud Earrings (pair)  
A likeness of the Egyptian black  
cat warrior and protectress. ‡ ♦



**E76 ▲  
Death Studs**  
Stud Earrings (pair)  
Miniature pewter skull studs,  
for the discreet fatalist.





**R239  
Baphomet**

Ring

Inspired by Éliphas Lévi's portrait of the goat-headed deity, and the reason for the Knights Templar's downfall.  
(Sizes : N, Q, T, W, Y)



**R240  
Blacksoul**

Ring

The black demon heart of a gothic seductress.  
(Sizes : L, N, Q, T, W)



**R234  
Goddess**

Ring

The Triple Goddess of Wicca is represented with the elemental full moon pentagram at its heart.  
(Sizes : L, N, Q, T)



**R235  
RIP Rose**

Ring

Dark and deadly passion from beyond the grave.  
(Sizes : L, N, Q, T)



**R236  
Voodoo Doll**

Ring

The traditional Folk Magic method of destroying a witch's power, or cursing a rancorous foe. With chained removable pin. (Sizes : N, Q, T, W)



**R237  
Token Of Love**

Ring

A dark and mystical love stays hidden within this token ring.  
(Sizes : L, N, Q, T)



**R238  
Little Devil**

Ring

The heart of The Devil, to signify your love of the wicked! The red enamel heart is bounded by a pair of Austrian crystals. (Sizes : L, N, Q, T) ‡



**R232  
Ravenette**

Ring

The darkened quietude of sorrow. (Sizes : L, N, Q, T)



**R228  
Psalm 68**

Ring

"Let God arise and His enemies be scattered"; the serpent of the underworld. Set with Emerald Austrian teardrop crystal.  
Adjustable Sizes:  
L - N, (Small), Q - T, (Med) ‡



**R223  
Bacchanal Rose**

Ring

A romantic motif concealing a secret libertine passion. Set with two Austrian crystals and black acrylic rose.  
(Sizes : L, N, Q, T) ‡



**R216  
Stealth**

Ring

Under the cloak of night, the bat crawls towards its intended prey.  
(Sizes : N, Q, T, W, Y)



**R224  
Bastet Goddess**

Ring

The perfect feline fantasy; the Egyptian cat warrior goddess of sexuality and the moon. With Austrian crystal eyes.  
(Sizes : L, N, Q, T) ‡



**R222  
Emerald Venom**

Ring

The deadly predator is quiescent, poised to strike when it may sate its desire. With Austrian Olivine crystal body. (Sizes : L, N, Q, T) ‡



**R219  
Triple Goddess**

Ring

The pearly full moon between waxing and waning crescents, invoking healing, occult protection and wealth. With mother-of-pearl cabochon. (Sizes : L, N, Q, T) ‡



# RINGS



## INTERNATIONAL SIZE GUIDE

English:	L	N	Q	T	W	Y	Z1
American:	6	7	8½	9½	11	12	13
European:	12	15	18½	21	23	27	28
German:	1.7	1.8	1.9	2.0	2.1	2.2	2.3
Japanese:	10	13	16	19	23	25	27

Alchemy's rings are available in various sizes. The sizes stated are intended as a guide only, and are **NOT** always strictly accurate.

## DIAMETER RING GAUGE

To gauge your ring size using the circular guide, place a suitably sized existing ring over the size indicators here and choose the closest size to the inner circle.



## LINEAR RING GAUGE

To gauge your ring size using the linear guide, wrap a 5mm wide X 10cm long (approx.) strip of paper around the required finger and mark the point of overlap with a pencil. Then lay flat against this linear guide.

Z1 Y W T Q N L



Linear Ring Gauge



Model is wearing -

R219 Triple Goddess ring  
R223 Bacchanal Rose ring  
P823 Nocte Amor choker

Model: **Dragonfly**  
facebook.com/GuiDragonfly





**R6  
Death Ring**  
Ring  
The famous blank, stark expression of the face of death.  
(Sizes: N, Q, T, W, Y)



**R210  
Claddagh By Night**  
Ring  
Love, Friendship and Loyalty vouchsafed from the underworld; with Siam Austrian heart crystal.  
(Sizes: L, N, Q, T) ‡ ♦



**R221  
Kraken**  
Ring  
Evil from the deep, tightening its grip about your finger.  
(Sizes: N, Q, T, W)



**R215  
Ouija Eye**  
Ring  
Seeing into the past, the present and the future with the unsettling guidance of the spirit board.  
(Sizes: Q, T, W)



**R173  
Runeband**  
Ring  
Nordic runes recite the mantra, 'Poetry is in Battle'.  
(Sizes: Q, T, W, Y, Z1)



**R195  
Viking Virility  
Runer**  
Ring  
The two bindrunes are made from Uruz and Teiwaz, for the fighting strength of a warrior; and Inguz and Gebo for a virile union and partnership. (Sizes: Q, T, W, Y)



**R71  
Agla**  
Ring  
Five magical talismans of profit and protection. The central Kabbalistic sigillum "Agla", stands for 'Thou art mighty forever O Lord', with the remaining four seals for love, memory, safety and peace. (Sizes: N, Q, T, W)



**R220  
Rabeschadel Kleiner**  
Ring  
The sinister black bird, famous as Odin's messengers and for their prophetic powers and foretelling death.  
(Sizes: L, N, Q, T, W, Y)



**R183  
Vis Viva**  
Ring  
The living power; overwhelming energy and the force of life encircles and liberates the wearer; with Austrian crystals. ‡ ♦  
Adjustable Sizes: Small (L - N), Med (Q - T) & Large (W - Y)



**R206  
The Sophia Serpent**  
Ring  
The Ouroboros, ancient Gnostic symbol of eternity, rebirth and the unity of everything, representing the sun and soul of the world.  
(Sizes: L, N, Q, T, W, Y) ‡ ♦





**R212**  
**Demon Black & Angel White**

Promise Ring

On each ring are inscribed seven magical signatures; one of angels, the other of 'demons'. Summon the assistance of the spirits!

Unique split ring in contrasting light & dark finishes. (Sizes: N, Q, T, W)



**R134**  
**Betrothal**

Ring

A miniature rococo masterpiece of romantic metaphor, with the blood red enamelled heart of passion. (Sizes: L, N, Q, T)



Model is wearing -  
**R212 Demon Black & Angel White**  
double ring  
**R224 Bastet Goddess ring**  
Model : **Mahafsoun**  
[facebook.com/MahafsounArt](https://facebook.com/MahafsounArt)



# ARMWEAR



## A138 ▲ Baphomet

Wrist-Strap

Éliphas Lévi's portrait of the goat-headed deity, and the reason for the Knights Templar's downfall. On adjustable leather strap.



## ◀ A102 Gears of Aiwass

Wriststrap

Aleister Crowley's incorporeal intelligence and dictator of his transcribed and ultra-complex, sacred text, 'The Book of the Law'. On adjustable leather strap.



## A98 ▲ Thunderhammer

Wriststrap

The Norse god Thor's mighty weapon of utter destruction, Mjolnir. On adjustable leather strap.

## ◀ ULA1 Ace Of Dead Spades

Wriststrap

Italian leather wriststrap with pewter & black-enamelled ace of spades plate, including raised, sculpted death's head. On adjustable leather strap.





**A109 ►  
Black  
Consort**  
Wriststrap

The majestic raven, wings outstretched, gliding alongside its adopted squire offering protection and guidance.

On adjustable leather strap.



**A105 ▲  
Rabeschadel Wriststrap**  
Wriststrap

The great black bird is famous for its prophetic powers, being Odin's messengers and capable of foretelling death.

On adjustable leather strap.



Model is wearing -  
R220 Rabeschadel Kleiner ring  
A109 Black Consort wriststrap

Model : **Mahafsoun**  
facebook.com/MahafsounArt



**A111 ▲►  
Desmodus**  
Wriststrap

The metaphor to capture that dark and dangerous creature that stalks the night. One size Adj.





**A103 ▶  
No Man's Land**

Wrist Chain

Emerging from the bottomless mud and gore of the fields of Passchendaele, the ruins of humanity and war blossom. Sizes: Small & Large.



**A78  
Elizabethan**

Bangle

Robert Dudley's original design for the tracery molding above the North entrance to Kenilworth Castle for his great love, alas, never used; with Austrian crystal hearts.

One size Adj. \* ‡ ◆



**A135 ▲  
Worshipping Bastet**

Bracelet

A triple goddess shrine to the Egyptian warrior cat and protectress, bringer of joy and goddess of sexuality. With Austrian Siam crystal eyes. ‡ ◆



Model is wearing -  
A135 Worshipping Bastet bracelet  
R224 Bastet Goddess ring

Model: **Dragonfly**  
facebook.com/GuiDragonfly

\* **CAUTION:** Repeated over-bending of bangles will cause metal to fracture.





Model is wearing -  
**E403** The Sophia Serpent earrings  
**P801** Santiago Cross pendant  
**A121** The Sophia Serpent bangle

Model : **La Esmeralda**  
 @Alternative.Model.La.Esmeralda

Photo : **Silver Pearl Photography**  
[www.silverpearlphotography.blogspot.com](http://www.silverpearlphotography.blogspot.com)



**A121**  
**The Sophia Serpent**

Bracelet

The Ouroboros, ancient Gnostic symbol of eternity, rebirth and the unity of everything, representing the sun and soul of the world.  
 Sizes Small & Large. ‡



**A125**  
**Wild Black Rose**

Hinged Bracelet

A trinity of jet-coloured blooms - a portent of love from the shadows. With magnetic fastening & safety chain. Sizes: S/M & M/L.



**A29**  
**Vertebrae**

Hinged Bangle

The metallised spine of a vanquished predator, forms this hinged, articulated bangle; with safety chain. Size: Medium Adj.



**A124**  
**Dragon's Lure**

Hinged Bangle

The lacertilian seducer wraps around your wrist to impel a new direction upon your will. A hinged bracelet securely fastened with a magnetic catch and a brass safety chain.

Size: Small (approx 7", 178mm inner circumference)



# ACCESSORIES



## SB1 ▲ Skull Logo Shopping Bag

Shopping Bag  
Fold-up shopping bag featuring repeating Alchemist skull design. Supplied in a small carrying pouch with stud fastening and belt clip for easy storage.



## ACWT4 ▶ La Fée Verte Absinthe Spoon

Absinthe Spoon  
Traditional sugar cube strainer for watering down absinthe; in the form of an Art Nouveau fairy.



## ROSE8 ▶ Black Rose Spray

Roses  
The iconic Alchemy Black Rose has blossomed into a collection of stunning flowers to adorn your crypt or boudoir.

## ▲ ROSE1 Black Rose

Rose  
Convincing, artificial symbol of perfection and tragic love.



# HAIR ACCESSORIES



▲ **ABR1  
Funereal Beard  
& Hair Beads**  
Beard / Hair beads (Set of 3)

Essential regalia for the well appointed mute and pagan mourner. Set of 3 includes Janus Skull, Coffin & Alchemist Skull.

▲ **ABR5  
Norsebraid Beard  
& Hair Beads**  
Beard / Hair beads (Set of 3)

The complete Viking warrior's amuletic tool kit, to incite a berserker's invincibility. Set of 3 includes Thor's Hammer, Raven's Skull and Viking Warrior's Helmet.



**HH1  
Darkling  
Bat Slide**

Hair Slide

The classic vampiric bat swoops spreadeagled towards it's prey.



**HH10  
Black Raven Hair Slide**

Hair Slide

The Raven - the modern vampire and 20th century symbol of the undead; in blackened pewter.



Model is wearing :  
HH1 Darkling Bat hair slide  
E365 Wounded Love earrings.

Model : **Dragonfly**  
facebook.com/GuiDragonfly



# ALCHEMY<sup>®</sup>

England • 1977

## HOME & GIFT COLLECTION

• SPRING 2024 •

### GLOBE & LANTERN LED LIGHTS



AA battery operated glass lamp.  
Uses 3x AA Battery. Batteries are not included.



LED1  
Angels & Demons  
LED Globe Light



LED3  
Pagan Calendar  
LED Globe Light

LED2  
Alchemy Astrology  
LED Globe Light

LED4  
Count Magistus  
LED Lantern



LED6  
Poe's Raven  
LED Lantern



LED5  
Witch by Moonlight  
LED Lantern



© All designs are the exclusive copyright of Alchemy Carta Ltd. 2024.

WWW.ALCHEMYENGLAND.COM



## SALT & PEPPER SETS

Ceramic Salt & Pepper Sets.  
Food Safe & Dishwasher safe.



MRSP4  
White Magic / Black Magic  
Salt & Pepper Set



MRSP5  
S - Spells / P - Potions  
Salt & Pepper Set



SG7  
Favourite Spirit  
Stemless Glass



SG1  
Purrfect Brew  
Stemless Glass



SG2  
Last Orders  
Stemless Glass



SG4  
Witching Hour  
Stemless Glass

## STEMLESS GLASSES

Black Glass. Approx. Capacity 500ml.



SG5  
Magic Elixir  
Stemless Glass



SG6  
Deadly Nightcap  
Stemless Glass



SG8  
Tippie Moon  
Stemless Glass



SG3  
Witches Brew  
Stemless Glass



100% COTTON RUGS

# RUGS

SIZE: 50 X 80 cm



## RUG4 ▲ Poe's Raven

Cotton Rug

O pallid dome of long dead author,  
what dark mysteries lie with in ?  
Now but a perch for a beguiling raven,  
a cry of 'Nevermore' to summon it's kin.  
Edgar Allan Poe's immortal sentinel calls  
out it's tragic refrain.



## RUG3 ▲ Magic Carpet

Cotton Rug

Ideal for the ceremonial altar or sacred place where  
your spell weaving will be enhanced by a magical circle  
encompassing elemental rulers, sabbats and feasts which  
conjoin to turn the wiccan wheel of time.



## RUG2 ▲ Triple Moon

Cotton Rug

Maiden, mother and crone  
symbolised as the lunar goddess waxing  
and waning through the tides of time, as  
the enigma of the elemental pentacle  
beckons you to practice the craft.

## RUG1 ► Purrfect

Cotton Rug

As any witch worth their  
potions know, hearth and  
home are not complete  
without a magical black cat  
to bless and protect your  
dwelling. Welcome your favoured feline  
familiar over the threshold with the  
reassurance of a fine rug by the fire.



**ALCHEMY**  
England · 1977



# SCENTED CANDLE GOBLETS



SCJ10 ▲

## **Moon Tides - Black Cedar**

Scented Candle Goblet

The eternal ebb and flow of lunar purification from the spice of ancient Sumeria.

Bringing balance, rebirth and banishing negative energy.

SCJ11 ▲

## **Angels & Demons - Amber Leather**

Scented Candle Goblet

Divining the path of truth & wisdom as warm, healing aromas bring the calming clarity of inner sight to meditate on the ancient mystery,

'As above, so below'.

SCJ14 ▲

## **Elements - Sage & Jasmine**

Scented Candle Goblet

The scent of spiritual cleansing from earth, air, fire and water. Invoking peace, wisdom and creativity.

# PUMPKIN CANDLES



SCJ13 ▲

## **Pumpkin Spice Candle (Large)**

Scented Candle Jar

As night draws in and shadows loom, warming Jack-o-lantern aromas bring comfort to ward off unwanted spirits and bless hearth and home.

SCJ12 ▲

## **Pumpkin Spice Candle (Small)**

Scented Candle Jar

As night draws in and shadows loom, warming Jack-o-lantern aromas bring comfort to ward off unwanted spirits and bless hearth and home.



# CANDLESTICKS



V115  
Ulula Noctis  
Candlestick

▶V114

## Vespertilio

Bat Candlestick

Silent sentinel delighting in night. Flying on the border between one world and the next. Be it bird or beast at dusk or dawn, forever unseen at the dark of the moon.

◀V115

## Ulula Noctis

Wolf Candlestick

A true child of moonlight calls out it's wild rhapsody of darkness. Summoning its kind in the forest of night, where the prey is elusive and the hunt never ends.



V114  
Vespertilio  
Candlestick



## V109 Poe's Raven

Raven Candlestick

The cry of "Nevermore" cuts through the Stygian gloom, inspiring Edgar Allen Poe to give poetic voice to The Raven and light our way through the dark night of the soul.

## V113 Faust's Familiar

Cat Candlestick



Keeping an all seeing vigil at the witching hour with eyes that see beyond the veil, as spirits are invoked to serve an unseen enchanter. Nine times he returns to tell of things yet unknown.

## V116 Owl of Astrontiel

Owl Candlestick

Attendant spirit to a dark goddess and silent spectre of the wilderness, bringing gifts of erudition and prophecy to those with an appetite for midnight.





# COFFIN CASKETS



V118  
Bride of  
The Dark Kiss  
Casket & Figure



Removable 3D figure  
and secret mirror on the  
reverse of the coffin lid.



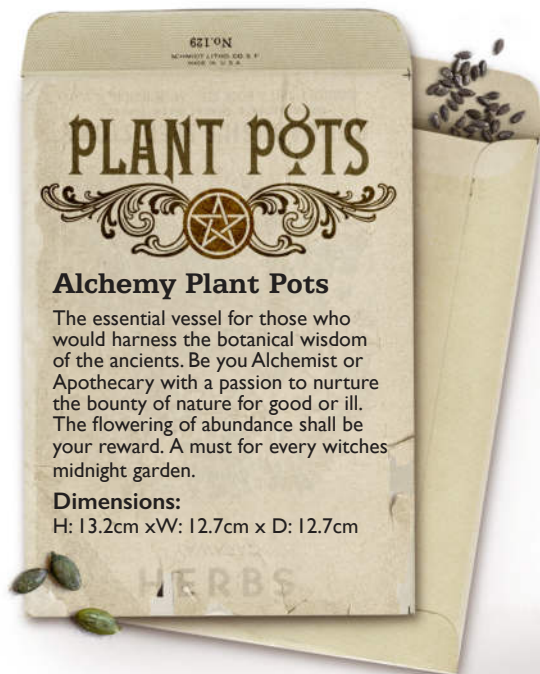
◀ V117  
**Nosferatu's Rest**  
Casket & Figure  
Noble progenitor of the royal bloodline.  
The prince of darkness lies supine in the  
deathless sleep of eternity. The prophecy  
tells he will rise again and the night shall  
rejoice.



V117  
Nosferatu's Rest  
Casket & Figure

▲ V118  
**Bride of The Dark Kiss**  
Casket & Figure  
Untainted by dawn's embrace, the fairest  
beauty is shunned by death's long shadow.  
Dreaming of sweet blood in the eternal  
hibernation of the damned.





## Alchemy Plant Pots

The essential vessel for those who would harness the botanical wisdom of the ancients. Be you Alchemist or Apothecary with a passion to nurture the bounty of nature for good or ill. The flowering of abundance shall be your reward. A must for every witches midnight garden.

### Dimensions:

H: 13.2cm xW: 12.7cm x D: 12.7cm

### GPP6

#### Witches Spell Garden

Plant Pot

A stunning plant pot featuring the only plants and herbs a true witch will ever need to grow. Thyme, Lavender, Sage, Rosemary, Nightshade, Hemlock, Nettle, Mugwort, Valerian, Mint, Basil, Wolfsbane.



**GPP1**  
Witches  
Garden



**GPP2**  
Magic  
Garden



**GPP3**  
Catnip



**GPP4** Water Don't Torture



**GPP5** Wet Your Plants



**GPP7** Dead Plant



# MUG WARMERS

Light the sacred flame of rituals long past to evoke a purifying warmth that will drive out the demons of discomfort through an incantation and a Witch's brew.

Multi-use mug warmer stands; simply pop a tealight into the base and keep your drinks hot for longer (mug included). Or simply use without the mug as a beautiful tealight holder and see shadows of the dark flicker in your boudoir.

By adding your own crystal ball, will also serve perfectly as a scrying stand for your crystal ball as you divine the ghosts of the futures yet to come!

(2 piece set: Mug warmer stand & Mug).



MWCB2 ▲  
**Cat**  
Mug Warmer



MWCB1 ▲  
**Bat**  
Mug Warmer



MWCB3 ▲  
**Cauldron**  
Mug Warmer



MWCB4 ▲  
**Skull**  
Mug Warmer



Shown as T-light holder.



Shown as crystal ball stand.



# The Vault™ by Alchemy

Original and official:  
Quality resin giftware, designed  
by Alchemy Studios, England.



## V107 Triple Moon Caludron Pot

Pot / Tea Light Holder

The enchantress Ceridwen's vessel of rebirth, transformation and inspiration. By the power of three, so mote it be.

A beautiful cauldron inspired pot, the perfect place for your trinkets and treasure. Tea light can be used with lid off only.



## V109 Poe's Raven

Candle Stick Holder

The cry of "Nevermore" cuts through the Stygian gloom, inspiring Edgar Allen Poe to give poetic voice to The Raven and light our way through the dark night of the soul.



## V106 Black Raven Photo Frame

Photo Frame (6x4)

Odin's oracle, wisest of birds and herald of the gods, bearing our whispered oaths to the halls of Valhalla. This black resin photo frame can be free standing or wall hung, accommodates a 6x4" picture or photo.



**V112**  
**Lunaeca Tea**  
**Light Holder**

Tea Light Holder

Crepuscular apparition, summoned by devotion and conjured in the temple of Artemis at the dark of the moon. The most darkly beautiful bat tea light holder which will cast shadows of the moon phases around your abode.



**V111**  
**Cathedric Mirror**

Mirror

Look into the cathedral window and see your reflection! This mirror can be wall hung or free standing.



**V110**  
**Cathedric Photo Frame**

Photo Frame (6x4)

Invoking the gothic heritage of a lost epoch to fill us with awe and foreboding as we behold it's blackened edifice reaching to the heavens.



**V105**  
**Black Raven**  
**Mirror**

The black raven surrounds a beautiful oval mirror. A totally unique addition to your boudoir. Black resin mirror, can be free standing or wall hung.





# Goblets

An impressive trio of goblets to toast your celebratory occasions! The perfect addition to your altar or banqueting table and a show piece for your home. Hand finished in finest resin with a steel cup inlay.

To preserve the life of this goblet you must not dish wash or submerge in water.  
Cup can be wiped clean after use. Decorative item only.





**VG1**  
**Blood Heart Goblet**

Goblet

An Affaire du Coeur - for love shall survive even death. A dark and Delphic romance of the heart between two strange and exotic creatures, affirming a bond that transcends our earthly realm and reaches unto the Elysium fields of eternity.

A stunning hand painted goblet/chalice with skull, heart and vine detail. Inlaid with faux crystals and cabochons representing puddles of blood.

Approx. Height : 18.9cm (7.44")



**VG2**  
**Ruah Vered Goblet**

Goblet

The elemental star that protects the all-powerful panacea of the black rose, for the pentagram is the fifth element; the spirit and the 'Breath of Life', passionately entwined with the romantic and sensual rose of faithful love to ensure health, harmony and Erosean mystical powers.

A stunning hand painted goblet/chalice with iconic pentagram and black rose decoration.

Approx. Height : 18.9cm (7.44")



**VG3**  
**Sacred Cat Goblet**

Goblet

Sip from the cup and you may divine the feline prophesies of Ailouros, heart spirit of the temple of Amun. Pray for her blessings, for she is the bringer of music, dance, good fortune, and joy to everyone.

A stunning hand painted chalice/goblet featuring your favourite feline friend!

Approx. Height : 18.9cm (7.44")





# Goblets



Model is wearing :

P829 Dragon's Lure necklace

R209 Sub Rosa Poison ring

and holding

VG2 Ruah Vered goblet

Model & Photo : **The Lilitth**

@thelilitth



# SCENTED CANDLE JARS

## Blood Rose

A collection of blood rose red, vintage inspired, lidded candle jars, each encapsulating a sensual scented candle. Light the candle and let the dark sensual aroma of the 'Blood Rose' envelop your boudoir! Once the candle has burnt, these stunning, cut glass effect jars can then be used to keep safe your trinkets and treasures!

### SCJ6 ▶ Blood Rose Scented Boudoir Candle Jar (Large)

Candle Jar  
A blood red glass candle jar  
with a scented soy wax candle.  
Height approx. 13.5 cm.

### SCJ7 ▼ Blood Rose Scented Boudoir Candle Jar (Small)

Candle Jar  
A blood red glass candle jar  
with a scented soy wax candle.  
Height approx. 10 cm.

### SCJ9 ▼ Blood Rose Vintage Scented Candle Jar (Round)

Candle Jar  
A blood red glass candle jar  
with a scented soy wax candle.  
Height approx. 10 cm.



### SCJ8 ▲ Blood Rose Vintage Scented Candle Jar (Square)

Candle Jar  
A blood red glass candle jar  
with a scented soy wax candle.  
Height approx. 11.3 cm.

SCJ6  
With lid  
removed &  
candle lit.

SCJ9  
With lid  
removed &  
candle lit.





1  
SA21  
Small Black  
Rose Heart Frame



3  
SA20  
Black Rose  
Dressing Table Mirror



2  
V107  
Triple Moon  
Cauldron Pot



4  
V108  
Black Moon  
Hand Mirror



4 V108  
Black Moon  
Hand Mirror  
Hand Mirror  
Glimpsed through the shroud  
of deepest night - The lunar  
goddesses dark aspect. Bathing  
us in her baleful power.

1 SA21  
Small Black  
Rose Heart Photo Frame  
Photo Frame (3x3)  
Tiny black roses form a heart shape  
to display a photo of your loved one.  
Fits a 3"x 3" photo. Frame can be  
free standing or wall hung.

2 V107  
Triple Moon  
Cauldron Pot  
Pot / Tea Light Holder  
The enchantress Ceridwen's vessel  
of rebirth, transformation and  
inspiration. By the power of three,  
so mote it be.

3 SA20  
Black Rose  
Dressing Table Mirror  
Table Mirror  
A beautiful addition to your  
boudoir and dressing table.  
A freestanding resin dressing  
table mirror with black rose detail.



Alchemy designed, cauldron inspired, lidded bowls, complete with spoon & featuring unique Alchemy artwork. Perfect for soups, broths, cereals and serving snacks.

# BOWL AND SPOON SETS

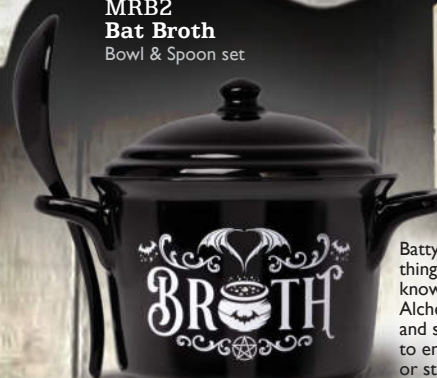
The set comprises of 3 pcs; bowl, lid and spoon all presented in Alchemy branded packaging. The bowl will hold a standard size tin of soup approx. 425ml (14oz). (Suitable for Oven, Microwave and Dishwasher use.)

**MRB1**  
**Purrfect Stew**  
Bowl & Spoon set



Fancy a 'PURRFECT' stew for dinner? Then we have the perfect bowl and spoon set for your dinner table. Or perhaps the 'PURRFECT' gift for that feline loving friend of yours.

**MRB2**  
**Bat Broth**  
Bowl & Spoon set



Batty about bats, food and nice things to put food in? We just know you're going to love this Alchemy 'broth' lidded bowl and spoon set. A fantastic way to enjoy your, broth, soup, cereal or stew!

**MRB3**  
**Bone Appetit**  
Bowl & Spoon set



Feeling 'Dead Hungry'? Enjoy your meal from this unique lidded bowl and spoon set - 'Bone Appetit'!!

**MRB5**  
**A Bite To Eat**  
Bowl & Spoon set



Fancy 'A Bite To Eat'... Would you dare eat from a vampires pot? A unique lidded bowl and spoon set perfect to serve or slurp from!!

**MRB6**  
**Witches Secret Recipe**  
Bowl & Spoon set



Hubble Bubble, what's contained within the witches cauldron? A witches pot for making potions, spells and divine dinners!

**MRB7**  
**Feline Hungry**  
Bowl & Spoon set



A truly unique gift for that feline loving friend of yours. A stunning lidded bowl and spoon set featuring a black cat silhouette and moon design and the words 'Feline Hungry'.



**MRB4**  
**So Hungry**  
Bowl & Spoon set  
I'm 'So Hungry' I could eat myself! A fantastical dragon ouroboros features on this unique lidded bowl and spoon set!

Shown with lid removed.



**V50 ▼**  
**Anguistralobe**  
 Desk Clock

A Daedalian C18th instrument which measured the direct path of destiny between specified heavenly bodies. Requires 1 x 1.5v, AA battery - not included.



**V88 ▼**  
**Wiccan Desk Clock**  
 Clock

The sacred triple moon, revered and understood by the ancients. Who's unseen rhythms lead the fertility and harvest of the land and sea through the endless cycle of time. Requires 2 x AA batteries - not included.



**V15 ▲**  
**The Stormgrave Chronometer**  
 Desk Clock

Professor Stormgrave's patent celestial chronometer, mapping the forces that govern the passing of eternity. Requires 1 x 1.5v, AA battery - not included.



**V71 ▲**  
**Grimalkin's Ghost**  
 Desk Ornament

Feline familiar to the great French prophet and astrologer - Nostradamus, who having outlived his master, carried the seer's arcane wisdom from Paris to London where he eventually fell in with one William Shakespeare.

**V17 ▲**  
**Poe's Raven**  
 Desk Ornament

Inspiring Edgar Allan Poe, Master of the Macabre to give poetic voice to the Raven, "NEVERMORE".



V86 ▼

### Triple Moon

Wall or Desk Photo Frame  
Arianrhod's ancient symbol of the waxing, full and waning moon. The goddess as maiden, mother and crone in a cosmic cycle of life and death, reincarnation and rebirth.



V86 Photo - Mahafsoun



V87 Triple Moon

V87 ▲

### Triple Moon

Wall or Desk Mirror

V85 ►

### Triple Moon

Trinket Dish / Candle Holder  
Hallowed altar to the goddess Cerridwen, cauldron of wisdom and vessel of the sacred flame, watched over by the horned crescents of the virgin and the crone.



V85 Triple Moon



V91 ▲

### Tree of Death

Dish

The ghost of Cernnunos - the horned king, bereft of his foliate crown. The lord of the dark forest and master of winter, leading the wild hunt with his ancient chant:

"Hoof and horn, hoof and horn:  
All who die shall be reborn.  
Corn and grain, corn and grain:  
All that falls will rise again."



V91 Tree of Death



◀ P873 Pagan Dream Catcher Necklace



# HAND MIRRORS

The  
**Vault**  
by  Vebemy



◀ **V64B**  
**Sacred Cat Hand Mirror (Black)**  
Hand Mirror  
Gaze into the glass long enough and you shall divine the feline prophecies of Ailouros, hearth spirit of the temple of Amun.  
Approx. height: 22cm.



**V64 ▶**  
**Sacred Cat Hand Mirror**  
Hand Mirror  
Gaze into the glass long enough and you shall divine the feline prophecies of Ailouros, hearth spirit of the temple of Amun.  
Approx. height: 22cm.



◀ **V80B**  
**Devil's Heart Hand Mirror (Black)**  
Hand Mirror  
Saint or Sinner?  
Love, dark passions, and lustful desires are akin to the rapturous reflection that sees all.  
Approx. height: 23cm.



**V9 ▶**  
**Fate Of Narcissus**  
Hand Mirror  
Stare long enough into the argent pool and one inescapable destiny shall befall all, be they God or mortal.  
Approx. height: 18cm.





1 V93

### Pumpkin Skull Pot

Pot

Ichabod Crane's immortal adversary carved with sigils of power to enhance his dread influence beyond the confines of All Hallows Eve, and spread terror throughout the rest of the year.



Pumpkin Skull Pot  
Open view

2 V92

### Triple Moon Spell Box

Box

A magical casket dedicated to the three aspects of the moon goddess: maiden, mother and crone. Drawing down the planetary influences of Mercury, Mars, Venus and the Earth beneath our feet, to enhance your spellcraft for good or ill.



Triple Moon Spell Box  
Open view

3 V85

### Triple Moon

Trinket Dish / Candle Holder  
Hallowed altar to the goddess Cerridwen, cauldron of wisdom and vessel of the sacred flame, watched over by the horned crescents of the virgin and the crone.



Triple Moon  
Top view

1  
V93  
Pumpkin Skull Pot

3  
V85  
Triple Moon

2  
V92  
Triple Moon Spell Box





**V104B▲**  
**Skull Moon Box**  
**(Matte Black)**

Trinket Box

The old man in the moon is not always the avuncular gentleman of fairy tales, but the vestige from a time when night's true terror was felt by all.

Approx. height 20.3cm.



**V104S▲**  
**Skull Moon Box**  
**(Silver)**

Trinket Box

Approx. height 20.3cm.

## TRINKET BOXES



**V102▲**  
**Vegvisir Box (Black)**

Trinket Box

The Nordic stave way-finder casket shows the 9 Realms of Asgard, the Viking World. The eight divine worlds that encompass Midgard, the human world, and are named in runic script.

Approx. width 8.5cm.



**V103▲**  
**Hour Of The Wolf Box**  
**(Antique Silver)**

Trinket Box

Enchanted by the beckoning tide of midnight. A true child of the moon, calling out across the limitless wilderness.

Approx. width 8.5cm.



**V90▶**  
**Witches Familiar**

Ornament

The archetypal familiar spirit and witches companion, slumbers in the goddesses circle of power, watched over by the waxing and waning moons.

Approx. width 20.5cm.

The  
**Vault**  
by **Alchemy**





**V62  
Anguistralobe**

Trinket Dish

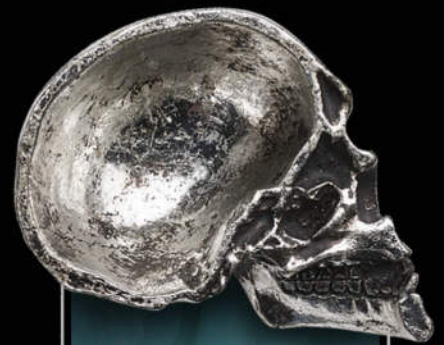
Commemorative dish celebrating the C18th instrument which measured the direct path of destiny between specified heavenly bodies.  
Approx. diameter 9cm.



**V61  
Vampyr Bat**

Trinket Dish

The torpid revenant awakens to the moon dawn, to quench it's thirst for mortal blood.  
Approx. width 8cm.



**V60  
Half Skull**

Trinket Dish

Cleaved asunder, the untenanted skull of a once mighty overlord who's sequestered secrets hide within it's fissures.  
Approx. width 8.5cm.



**V28  
Raven's Ward T - Light Holder**

T-light Holder

The harbinger of the old gods, illuminating the dark night of the soul.  
(Candle not included). Approx. height 11cm.



**V59  
Pentagram Box**

Trinket Box

The Stella Rosarium protects your precious treasures with sacred geometry from Chalisbury Cathedral's Rose Chapel.  
Approx. width 16cm.



# COMPACT MIRRORS



Front

## V38 Gothic Heart

Compact Mirror

An exquisitely carved window reflecting the beauty and barbarity of a lost golden age of mediaeval chivalry. Approx. height 8cm.



Back



Front

## V27 Nevermore

Compact Mirror

Gaze upon your mortal reflection under the scrutiny of Poe's mocking Raven. Approx. width 9cm.



Back



▲ Model :

R224 Bastet Goddess ring

V64 Sacred Cat hand mirror

Model & Photography : **Joan Wolfie** - @joanwolfie

◀ Model :

V27 Nevermore compact mirror

Model & Photography : **Magda Corvinus** - @magda\_corvinus





**V67 ▲  
Omega Raven Skull**

Desk Ornament

Inscribed with protective wisdom of arcane cabalistic spells and channeling the influence of Huginn and Muninn, Odin's harbingers of thought and memory. Approx. length 16.5cm.



**V66 ▲  
Reliquary Raven**

Ornamental Raven / Necklace

To the followers of Mithras, the raven was a symbol of initiation into the deeper mysteries. A sacred talisman to steady the course and point the way through life's maelstrom. (Leather thong not supplied). Approx. length 6cm.



**V2 ▲  
Lapillus Worry Skull**

Pocket Bead

A diminutive yet uncanny skull to comfort and guide a troubled soul. Approx. height 1.5cm.

**V3  
Metalised Alchemist Gear Knob**

Gear Knob / Ornamental Skull

The original Philosophus Magus, guiding the traveller to the path of enlightenment. (Bored and fitted with a rubber grommet for self-tap screwing onto gear sticks). Approx. height 4.5cm.

**V41 ►  
Metalised Alchemist Skull**

Desk Ornament

A life-sized Alchemist's skull, immortalised in the mercurial lustre of the secret arts. With the traditional golden tooth. Approx. height, 13.5cm.



**V73 ►  
Steamhead Skull**

Desk Ornament

Unveiled to her majesty Queen Victoria at the great crystal palace exhibition of 1851. The first punk automaton. Lobotomised to reveal the mechanical consciousness of this unique period phenomena. Approx. height 20cm.





# DARK BOUDOIR

V99S  
Mirror side

## ◀V99S Raven Skull Hand Mirror (Antique Silver)

Hand Mirror

A raven skull inspired hand mirror or a unique desk ornament.  
Approx. height 15.2 cm.

## ◀FLO01 Tulips Bunch

Tulips

This collection of convincingly artificial flowers will add a divine darkness to your home.

## FLO02 ▶ Black Lily Bunch

Lillies

These stunning artificial flowers are the perfect way to adorn your crypt or boudoir.

## V96 ▶ Black Rose Triple T-Light Holder

T-Light Holder

A beautiful black rose inspired T-light holder. The perfect centre piece for your dining table or mantel piece.  
Approx. height 11 cm, width 32 cm.



# MINIATURES



VM4  
Dragon  
Keepers Skull



VM2  
Unicorn  
Resin Miniature  
Approx. height 4.5 cm.



VM10  
Pumpkin Skull  
Resin Miniature  
Approx. height 3 cm.



VM5  
Demon Skull



VM7  
Raven Skull  
Resin Miniature  
Approx. height 4.2 cm.



VM9  
Dragon Skull  
Resin Miniature  
Approx. height 2.2 cm.



VM6  
Alchemist Skull  
Resin Miniature  
Approx. height 2.5 cm.



VM1  
Ram Skull  
Resin Miniature  
Approx. height 2.5 cm.



VM5  
Demon Skull  
Resin Miniature  
Approx. height 3.1 cm.



VM4  
Dragon  
Keeper's Skull  
Resin Miniature  
Approx. height 3.6 cm.



VM3  
Cat Skull  
Resin Miniature  
Approx. height 5.8 cm.



VM8  
Steamhead Skull  
Resin Miniature  
Approx. height 3.9 cm.

These miniature models form part of the sought after high quality resin collection by Alchemy. Each miniature is lovingly made and painted by hand with intricate detail, making them the perfect gift for a loved one or a talisman to treasure! There are 10 extraordinary designs why not collect them all!

(Miniatures are illustrated here larger than actual size. Sizes range between 2.2cm high - 5.8cm.)





**SA17 ▲  
Rose & Vine (Black)**  
Photo Frame  
A beautiful decorative entwined  
rose and vine photo frame.  
To fit a 6x4" image.

**SA9 ►  
Rose**  
Candle Stick  
An exquisite black  
rose inspired candle  
stick.



**SA19 ▼  
Rose Heart (Black)**  
Trinket Box  
A delicate rose detailed,  
heart-shaped trinket box.  
The perfect place for treasured  
keepsakes to hide.



**V54B ▼  
Masque Of The Black Rose (Black)**  
Mirror  
All that remains of a legendary masquerade ball  
from the Eve of St. Levantius A noble, boyar  
vampire tryst, where the dark patricians revelled  
in a night of pure sensuality.





V29 ▶  
**Thor's Hammer  
Wall Mount**

Wall Mount

Thor's mighty hammer Mjölir  
commanding the primal energy  
of the storm. Approx. height 21 cm.



V46  
**Dragonlore Clock**

Desk Clock

The spectacular time dragon, sleeps  
his timeless guard upon an engraved  
stone that reads 'time, greatest of  
treasures'

Approx. width 13 cm.



V74  
**Skull T-Light Holder**

T-Light Holder

Thought shines eternally bright, whilst  
the ephemeral body withers as fallen  
fruit in the ground.

Approx. height 4 cm.



**ALCHEMY**  
England · 1977



# KITCHENWARE

1  
SR2  
The Dead  
Don't Stir



1 SR2  
**The Dead  
Don't Stir**  
Ceramic Spoon Rest  
A uniquely designed  
spoon rest for those  
that are looking for a  
dark distinctive kitchen.

2 CT8  
**Witches Brew**  
Ceramic Trivet  
A functional teapot  
shaped coaster bearing  
the 'Witches Brew' design.



2  
CT8  
Witches  
Brew

3  
CT9  
Freaks Like Me...



4  
CT10  
Dead  
Thirsty



3 CT9  
**Freaks Like Me...**  
Ceramic Trivet  
A darkly beautiful  
addition to any kitchen.

4 CT10  
**Dead Thirsty**  
Ceramic Trivet  
A dark and functional  
teapot shaped coaster  
bearing the 'Dead Thirsty'  
baroque skull design.





# CAULDRON COASTERS



Alchemy designed, cauldron inspired coasters are here! This exclusive ceramic cauldron shape has been created to perfectly present our most popular Alchemy artwork! A sensational gift for the Witch or Warlock in your realm.

(Coasters are approx. 96mm X 136mm with non-slip cork backing.)



CC26 ►  
**Ouija**  
Cauldron-Shaped  
Coaster



CC27 ▲  
**Witches Brew**  
Cauldron-Shaped Coaster

CC28 ▲  
**Nosferabru**  
Cauldron-Shaped Coaster



CC29 ▲  
**Purrfect Brew**  
Cauldron-Shaped Coaster

CC30 ▲  
**Magical Catnip**  
Cauldron-Shaped Coaster



CC31 ▲  
**Bat Brew**  
Cauldron-Shaped Coaster

CC32 ▲  
**Freaks Like Me...**  
Cauldron-Shaped Coaster





▲ SR6  
**Pot Head**  
Ceramic Spoon Rest

▲ SR5  
**Freaks Like Me  
Drink Tea**  
Ceramic Spoon Rest

SR7 ▲  
**Purrfect Brew**  
Ceramic Spoon Rest

◀ SR4  
**Witches Brew**  
Ceramic Spoon Rest

SR8 ▶  
**Bat Brew**  
Ceramic Spoon Rest

A unique addition to any Witches kitchen. Give your spoon a rest or dispose of your teabags on these teapot shaped rests!

▲ ATS5  
**Bat Brew**  
Tea For One Set  
A beautiful, high quality, fine bone China, 'Tea For One Set'. This three piece set includes everything you need to brew your perfect cup of tea. Presented in a striking gift box and features the 'Bat Brew' design. Dishwasher safe.

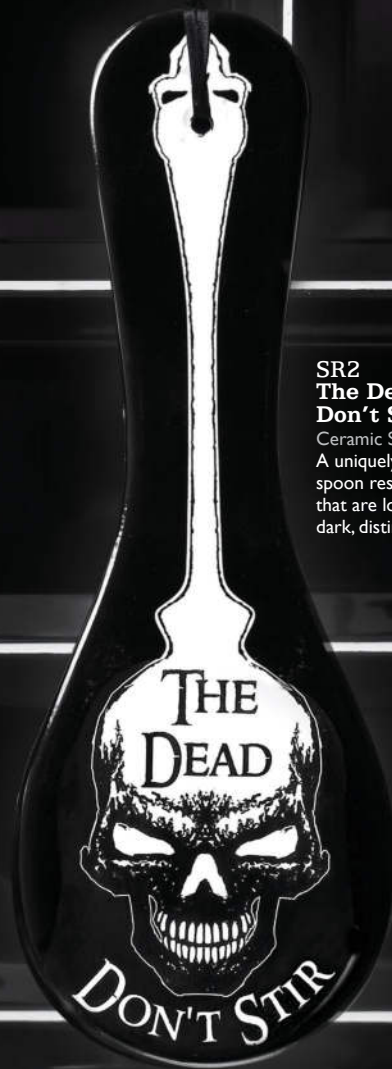
▲ ATS4  
**Purrfect Brew**  
Tea For One Set  
A beautiful, high quality, fine bone China, 'Tea For One Set'. This three piece set includes everything you need to brew your perfect cup of tea. Presented in a striking gift box and features the 'Purrfect Brew' design.

TEA  
FOR  
ONE





Three piece set.  
Tea pot, cup and saucer,  
with gift box.



**SR2**  
**The Dead**  
**Don't Stir**  
Ceramic Spoon Rest  
A uniquely designed  
spoon rest for those  
that are looking for a  
dark, distinctive kitchen.



▲ **ATS3**  
**Witches Brew Hex**  
Tea For One Set  
A beautiful, high quality, fine bone China, 'Tea For One Set'. This three piece set includes everything you need to brew your perfect cup of tea. Presented in a striking gift box and features the 'Witches Brew Hex' design. Dishwasher safe.



▲ **ATS2**  
**Freaks Like Me Drink Tea**  
Tea For One Set  
A beautiful, high quality, fine bone China, 'Tea For One Set'. This three piece set includes everything you need to brew your perfect cup of tea. Presented in a striking gift box and features the 'Freaks Like Me Drink Tea' design.





# MUG AND SPOON SETS



ALMUG14  
**Dragon Is Stirring**  
Mug & Spoon Set



ALMUG15  
**Hexy Witch**  
Mug & Spoon Set



Cause a stir with these incredible mug and spoon gift sets! Perfect for that tea or coffee loving friend!  
Or maybe a little treat just for you, it will truly serve you a fiendishly good brew.



ALMUG16  
**Witches Brew**  
Mug & Spoon Set



ALMUG17  
**Stirring Up Trouble**  
Mug & Spoon Set



**ALMUG18**  
**You Stir My Blood**  
 Mug & Spoon Set



**ALMUG19**  
**Freaks Like Me Drink Tea**  
 Mug & Spoon Set



390ml (13oz) Capacity with double-sided, custom design on mug & mini design on spoon.



**ALMUG20**  
**Purrrfect Brew**  
 Mug & Spoon Set



Each Mug & Spoon set come in purpose designed, sturdy presentation boxes.



# MUG AND SPOON SETS

ALMUG21  
**Bat Brew**  
Mug & Spoon Set



ALMUG22  
**Stirring Up Magic**  
Mug & Spoon Set



390ml  
(13oz) Capacity  
with double-sided,  
custom design  
on mug & mini  
design on  
spoon.



ALMUG23  
**Baphomet**  
Mug & Spoon Set



ALMUG24  
**Hellhound**  
Mug & Spoon Set



# ROSE GOLD MUGS

## ALMUG10 Dead Thirsty

Rose Gold Mug  
For the secret vampires amongst us.

### Gift Box Packaging

Each Rose Gold Mug comes with its own printed gift box, making it the perfect gift!



Half Pint Capacity, black ceramic mugs with rose gold motif and white lining.

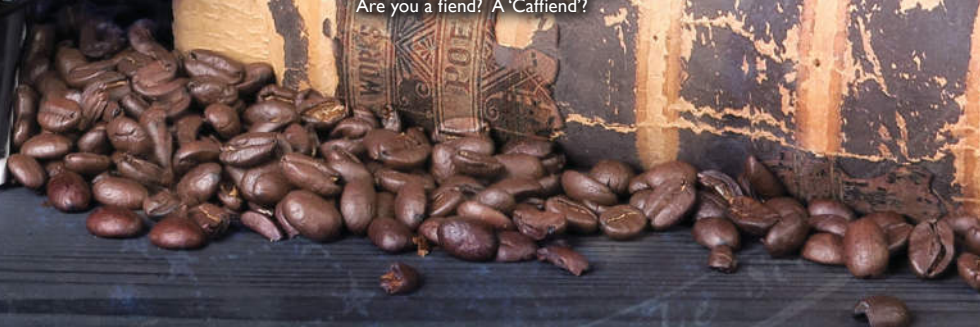
## ALMUG10 Dead Thirsty

Rose Gold Mug  
For the secret vampires amongst us.



## ALMUG13 Caffiend

Rose Gold Mug  
Perfectly suited to fans of caffeine.  
Are you a fiend? A 'Caffiend'?





# COUPLES MUGS

Couples Mug sets are a truly unique and exquisite gift, perfect for weddings, anniversaries or to show that special someone just how much you love them!  
Set of 2 complimenting, fine bone China\* mugs, with decorative heart shaped handles and featuring original Alchemy artwork.



## CM1 Witch & Warlock

Couples Mug set  
Witches and Warlocks will be sipping potions and making magic with these divine mugs.

350ml  
(11oz) Capacity  
with double-sided,  
custom design  
on mug.



## CM2 Queen of the Night & Lord of Darkness

Couples Mug set  
State your status as the ultimate power couple and be the Queen of the Night & Lord of Darkness - rulers of your own empire!





CM3

### Love Birds

Couples Mug set

These beautiful 'Love Birds' couple mugs feature original Alchemy art work of ravens forming a heart shape, the ultimate symbol of love just with a darker twist!



CM4

### Saint & Sinner

Couples Mug set

Saint or Sinner! You choose! One day a sinner, turn the mug around and you are a saint! Featuring both artworks on different sides, one side saint cat, the other side sinner cat!

### Gift Box Packaging



Couples Mug sets come in purpose designed, sturdy presentation boxes making them the perfect gift!

\*Fine bone China does not contain animal material.



# TRAVEL MUGS

Show the world your own unique style when on the go! These incredible travel mugs are made from the highest quality ceramic material and double walled to insulate. They keep your drinks hot or cold for longer than you will believe.



**MRDWM8 ▲**  
**Saint & Sinner**  
Double Walled Travel Mug



**MRDWM10 ▲**  
**Ouija - Good Brew**  
Double Walled Travel Mug



**MRDWM9 ▲**  
**Magic Brew**  
Double Walled Travel Mug



**MRDWM7 ▲**  
**Freaks Like Me Drink Tea**  
Double Walled Travel Mug



**MRDWM6 ▲**  
**Bat Brew**  
Double Walled Travel Mug



**MRDWM3 ▲**  
**Purrfect Brew**  
Double Walled Travel Mug



**MRDWM2 ▲**  
**Gothee Coffee**  
Double Walled Travel Mug



**MRDWM1 ▲**  
**Witches Brew**  
Double Walled Travel Mug

All mugs are approx. 15cm in height. Capacity 360ml (12oz) and all come in purpose designed, sturdy presentation boxes.



# BOTTLE STOPPERS



**RGBS1  
Vampire Blood**

Bottle Stopper  
Is that red wine you're drinking or perhaps its 'Vampires Blood'?



**RGBS2  
Let's Get Hammered**

Bottle Stopper  
Let's Get Hammered - Why the devil not!!!



**RGBS3  
Wyverex Dragon**

Bottle Stopper  
The classic and original artwork by Alchemy beautifully adorns this bottle stopper!



**RGBS4  
Triple Moon Cat**

Bottle Stopper  
A magic black cat guards your sacred drink!



**RGBS5  
Black Cat**

Bottle Stopper  
A mysterious guardian for your bottle!



**RGBS6  
Poison**

Bottle Stopper  
Is it really Poison?  
Would you dare to take a sip?



**RGBS7  
Demon Drink**

Bottle Stopper  
The Demon Drink cleverly inscribed within a Devils skull!



**RGBS8  
Witches Potion**

Bottle Stopper  
Dare you drink the 'Witches Potion'? Protect your favourite tippie with this cunning rebrand!



**RGBS9  
Drink Me If You Dare**

Bottle Stopper  
Do you dare drink the contents of the bottle?  
This 'Drink Me If You Dare' bottle stopper just might make you think twice!

Wonderfully unique ceramic & cork bottle stopper collection for your favourite tippie or perhaps a gift for a loved one. Adorned with original Alchemy artwork - 9 to collect!

Approx. 40mm diameter.





# CERAMIC COASTERS



Original Alchemy artwork Ceramic coasters  
for your hot drinks, cold drinks, Gothtails or  
spirits....perfect for your Crypt!  
Why not collect the whole range!

(All coasters come with a non-slip  
cork backing and are sold separately)





A set of 4 original Alchemy ceramic artwork coasters with slate-style edges and a high gloss finish. (Dimensions: approx. 10.8cm X 10.8cm)



**CC11**  
**Chemical Wedding**  
Ceramic Slate-Style Coaster



**CC12**  
**Poe's Raven**  
Ceramic Slate-Style Coaster



**CC13**  
**Sacred Cat**  
Ceramic Slate-Style Coaster



**CC14**  
**Paracelsus Cat Roses**  
Ceramic Slate-Style Coaster

A set of 3 original Alchemy ceramic artwork cut-out shaped coasters.  
(Skull coaster dimensions: approx. 12cm X 9.5cm; Cat coasters: approx. 11cm X 10.5cm)



**CC15**  
**Dead Thirsty Skull**  
Ceramic Skull-Shaped Coaster  
Are you 'Dead Thirsty'? If so this darkly fun coaster is the perfect addition to your crypt!



**CC16**  
**Triple Moon Cat**  
Ceramic Cat-Shaped Coaster  
Dark but cute, this triple moon magic cat coaster is definitely that!



**CC17**  
**Sacred Cat**  
Ceramic Cat-Shaped Coaster  
The exquisite and sought after Alchemy original artwork bestows this purrfect cat shaped coaster!

A set of 8 new original Alchemy ceramic artwork coasters in classic circular design. (Dimensions: approx. 9cm X 9cm)



**CC18**  
**Baphomet**  
Ceramic Coaster  
Add some devilish decor to your crypt. This Baphomet coaster will subtly show your dark side... 'If you know, you know'!



**CC20**  
**Saint**  
Ceramic Coaster  
Are you a saint or are you a sinner? Whatever you are this original Alchemy artwork coaster will definitely be a talking point for your guests.



**CC22**  
**Lord of Darkness**  
Ceramic Coaster  
For the 'Lord of Darkness' is your life! Team with the 'Queen of the Night' coaster and state your position as the ultimate power couple of the dark night!



**CC24**  
**Witch**  
Ceramic Coaster  
Are you a witch? Yes.. then celebrate it and add a little glamorous witchy decor into your home with this sassy little Witch coaster!



**CC19**  
**Love Birds**  
Ceramic Coaster  
This beautiful 'Love Birds' coaster features original Alchemy artwork of Ravens forming a heart shape, the symbol of love with a darker twist!



**CC21**  
**Sinner**  
Ceramic Coaster  
Are you a saint or are you a sinner? Whatever you are this original Alchemy artwork coaster will definitely be a talking point for your guests.



**CC23**  
**Queen of the Night**  
Ceramic Coaster  
For you the one and only Queen of the Night! Teamed with the 'Lord of Darkness' coaster.

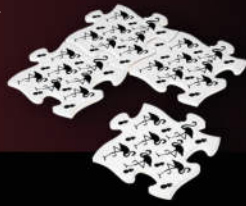


**CC25**  
**Warlock**  
Ceramic Coaster  
Calling you Warlocks out there, celebrate your magical powers with a little home decor!





**CJ2  
Flamingo / Pineapple**  
Ceramic Jigsaw Coasters  
4 piece black flamingo  
and pineapple design  
coaster set.



**CJ3  
Black Cats**  
Ceramic Jigsaw Coasters  
Black cats, pentagrams,  
stars & crescent moons  
adorn this stunning 4  
piece coaster set.



**CJ4  
Black Skull Cherries**  
Ceramic Jigsaw Coasters  
Black cherries or black skulls?  
You decide! 4 piece coaster set.



**CJ5  
Black Raven & Rose**  
Ceramic Jigsaw Coasters  
Alchemy raven and rose  
4 piece jigsaw coaster set.



**Gothtails!**  
Featured Jigsaw coaster sets;  
CJ3 Black Cats  
CJ1 Gothic Cocktail





CJ1 - Gothic Cocktails - The Full Set



CC1 - The Demon Drink



CC2 - Summon the Spirits



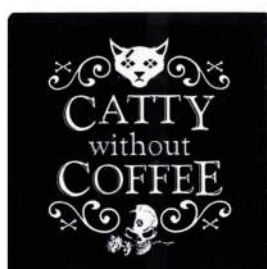
CC3 - Lets Get Hammered



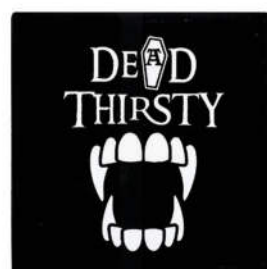
CC4 - Feeling Absinthe Minded



CC6 - Witches Brew



CC8 - Catty Without Coffee



CC9 - Dead Thirsty



CC10 - Black Coffee





Your meals will be cooked to purrrfection with these purrrfect 'Cat's Kitchen' Kitchen Utensils! Soft non-toxic, silicone utensils which work effectively and will protect your cookware. BPA Free, FDA approved.



FOOD GRADE SAFE  
DISHWASHER SAFE  
HEAT RESISTANT TO 230°C



**KU1**  
Cat's Kitchen  
Spatula



**KU2**  
Cat's Kitchen  
Pasta Spoon







**KU3**  
Cat's Kitchen  
Spoon



**KU4**  
Cat's Kitchen  
Slotted Spoon



**KU5**  
Cat's Kitchen  
Ladle



**KU6**  
Cat's Kitchen  
Whisk







1  
CT1  
Chop Chop

2  
CT4  
Cat's Kitchen

3  
CT5  
Hot Stuff

1 CT1  
**Chop Chop**  
Ceramic Chopping Board  
A fun and slightly gruesome  
design to add a little  
quirkiness into any kitchen!

2 CT4  
**Cat's Kitchen**  
Ceramic Chopping Board  
The dark and beautiful  
Alchemy black cat artwork  
is presented on this unique  
'Witches Kitchen' chopping  
board.

3 CT5  
**Hot Stuff**  
Ceramic Chopping Board  
Looking for some hot stuff  
in your kitchen? Then look  
no further than this devilish  
addition to your kitchen  
space.

All trivets and chopping boards can be hung up on a wall or  
used as a functional item. Either slice food, stand hot pans on,  
or used as a fun serving platter!





**CT11 ▶**  
**Roses Are Black...**

Trivet

A totally functional trivet or a decorative piece for the boudoir! A perfect token of love!



**◀CT12**  
**Witches Kitchen**

Trivet

A magical 'Witches Kitchen' chopping board / serving trivet. Stand this beautiful piece next to your bubbling cauldron and be the envy of witches for miles around!



▲ **MRSP1**  
**S+P**  
Salt & Pepper Set



▲ **MRSP2**  
**Ashes / Dust**  
Salt & Pepper Set



▲ **MRSP3**  
**Cats**  
Salt & Pepper Set

These unique Salt & Pepper sets form part of the exciting Home & Gift Collection brought to you by Alchemy.



▼ CT6  
**Trick or Treat**

Ceramic Trivet

This 'Trick or Treat' trivet or serving plate is not just for Halloween. Display treats all year round on this darkly delightful piece.

CT7 ▶  
**Skull Cupcake**

Ceramic Trivet

This dark but cute skull cupcake artwork will look sensational in any kitchen or dining room.





1  
ROSE3  
Large Black  
Rose Head



2  
ROSE6  
Black Rose  
Hanging Ball



3  
ROSE4  
Small Black  
Rose Head

5  
SRC3  
Black Rose  
Candle Holder  
(Pillar)



4  
ROSE7  
Black Rose  
Heart



V85 Triple Moon  
Candle Holder



SA9 Rose  
Candle Stick



1 ROSE3  
Large Black  
Rose Head

Black Roses  
An oversized artificial  
black rose with soft  
foam rose petals.

2 ROSE6  
Black Rose  
Hanging Ball

Black Roses  
A bundle of artificial  
soft foam black roses  
with hanging wire.

3 ROSE4  
Small Black  
Rose Head

Black Roses  
An oversized artificial  
black rose with soft  
foam rose petals.

4 ROSE7  
Black  
Rose Heart

Black Roses  
A heart shaped bundle  
of artificial soft foam black  
roses with hanging wire.

5 SRC3  
Black Rose  
Candle Holder

Candle Holder (Pillar)  
Created to fit a pillar  
candle, this holder can  
also be used as a useful  
little pot.



# HANGING DECORATIONS



**ALCHEMY**  
England · 1971



**HD25**  
**From The Crypt**  
Hanging Decoration  
Rising on wings of midnight  
from that forsaken  
subterranean realm,  
with an eternal thirst for  
the blood of the living.

**HD24**  
**Danu**  
**Goddess**  
Hanging Decoration  
Thrice great mother  
of the earth and all  
of the gods.



**HD26**  
**Zodiac Dream**  
**Catcher**  
Hanging Decoration  
Drawing down powerful  
celestial influences to  
ensnare the spirits of  
nightmare, ensuring an  
undisturbed slumber for  
the astral wanderer.





**HD27  
Lilith Moon**

Hanging Decoration

The high queen of demons,  
fore-filling her full majesty at  
the dark of the moon.



**HD29  
Witch By  
Moonlight**

Hanging Decoration

The deep tidal magic that  
dwells within all of our souls,  
summons us to take to our  
broomsticks and fly.



**HD30  
Evolution Moon Phase**

Hanging Decoration

At the full of the moon the  
vampiric curse shall reach it's  
apotheosis.



**HD28  
The Seal of Lilith**

Hanging Decoration

Summoning circle for the  
goddess of the dark moon.  
The principal influence on all  
rebel spirits.



**HD34  
Celestial Cat**

Hanging Decoration

The tides of time wax and wane  
watched over by a divine feline  
protector. The familial spirit sacred  
to those who practice the craft.



**HD32  
Personal Baphomet**

Hanging Decoration

Feeling unknown  
and you're all alone.  
Someone to hear your prayers,  
someone who cares,  
someone who's there.



**HD31  
Death's Head Moth**

Hanging Decoration

Acherontia atropos -  
A portent of sudden death,  
bearing the mark of  
the reaper.



**HD33  
Moon Gazer**

Hanging Decoration

Forever fixated by the  
cusp of light that cleaves  
the night asunder, Grimalkin  
sees the future yet his  
prophesies go unspoken.





# HANGING DECORATIONS



## HD13 Pentagram

Hanging Decoration  
Featuring three dancing  
pentagrams. This hanging  
decoration will look  
incredible in your home,  
boudoir or garden.



## HD19 Devil Heart

Hanging Decoration  
Love, is sinful, naughty  
and oh, so much fun!



## HD17 Viking

Hanging Decoration  
Enjoy your home on  
Midgard with this wind  
chime displaying the  
runic abbreviations of  
the nine realms of the  
Viking world.



## HD18 Planchette

Hanging Decoration  
Celebrate the  
technology of the  
19th century seance.



## HD16 Pumpkin Skull

Hanging Decoration  
Add a bit of spookiness  
to any domicile with  
this jack-o-lantern  
pumpkin wind chime





**HD20  
Cat Silhouette**  
Hanging Decoration  
Complete your home interior transformation or simply add a little witchy magic to your outdoor space.



**HD21  
Baphomet**  
Hanging Decoration  
Framed upon the occultist's pentagram, Eliphas Levi's portrait and representation of the dualist, goat-headed deity.



**HD22  
Night Owl**  
Hanging Decoration  
Companion to Athena the Greek goddess of wisdom and war.



**HD23  
Night Unicorn**  
Hanging Decoration  
The magical power of the unicorn rests in it's singularity for it is the sole survivor of an ancient lineage, who's fellows all perished in the great flood.



# HANGING DECORATIONS



Add your own unique style to any room, home or garden with these Alchemy designed hanging decorations / wind chimes.

- Suitable for both indoor and outdoor use. -



## HD12 Gothic Bat

Hanging Decoration  
The Gothic icon the black bat can now be a centre piece in your crypt or garden.



## HD8 Pentagram Dream Catcher

Hanging Decoration  
Shimmer and shine in the light and catch your dreams at night.



## HD9 Black Cat & Moon

Hanging Decoration  
Add a little witchy magic to your outdoor space or home interior.



## HD10 Spider

Hanging Decoration  
This three in one hanging decoration, wind spiral and wind chime will make a dark statement in your home or garden.





**HD11  
Wyverex Dragon**  
Hanging Decoration  
Based on our original  
iconic Alchemy Wyverex  
dragon. Truly a fantasy  
lovers dream décor item.



**HD4  
Crystal  
Fairy Unicorn**  
Hanging Decoration  
Add some magic into  
your private space and  
transport yourself to a  
magical kingdom of  
fairies and unicorns.



**HD5  
Eye of  
Providence**  
Hanging Decoration  
The 'Eye of Providence'  
wind chime will bring  
chimes of light and  
glory into your home.



**HD14  
Triple Moon**  
Hanging Decoration  
Add some Pagan magic  
into your home or  
garden with this triple  
moon and triquetra  
three in one wind chime,  
hanging decoration and  
wind spiral.





GL-QZ1  
Indoor use

GL-QZ1 ▲►  
**Bat Garden Light**  
LED Light



GL-QZ1  
Outdoor use

# LED LIGHTS

Add your favourite creature of the night to your home or garden and illuminate for all to see! These solar LED lights will be the perfect addition to your home or garden.

Battery powered LED lights.

To operate: Simply push the ON button and wait for night to fall.

(For indoor or outdoor use.)



GL-QZ2  
Indoor use

GL-QZ2 ▼►  
**Black Cat Garden Light**  
LED Light



GL-QZ2  
Outdoor use



# ALCHEMY

England · 1977

# Carpathia

BY NIGHT

A sixteen month calendar illustrated with Alchemy's unique brand of mesmerising **GOTHIC ARTWORK** Where beauty and fear stalk ancient byways in a gloaming land - Carpathia by Night.



**AVAILABLE TO ORDER NOW !**



CODE:  
CAL25

WWW.ALCHEMYENGLAND.COM



# SOCKS



**SOX001**  
**Catmas**  
Socks (S/M, M/L)



**SOX002**  
**The Alchemist**  
Socks (S/M, M/L)



**SOX003**  
**Gothic Bat**  
Socks (S/M, M/L)



**SOX004**  
**Feet Are Killing Me**  
Socks (S/M, M/L)



**SOX005**  
**Dead Man Walking**  
Socks (S/M, M/L)



**SOX006**  
**Dead On My Feet**  
Socks (S/M, M/L)





# HANGING SIGNS



ALHS14

**HANGING SIGNS**  
From the philosophical musings of the Alchemist himself and the artists of Alchemy Studios, come a collection of profound and essential dark pearls of wisdom; 90 x 65 mm mini, enamelled metal signs, pre-strung to hang anywhere.



ALHS15



ALHS19



ALHS20



ALHS18



ALHS8



ALHS11



ALHS10



ALHS1



# M'ERA LUNA

# ALCHEMY

~ OFFICIAL MERCHANDISE ~

## THE MAN IN THE MOON COLLECTION

The unmistakable face of the World's greatest Goth & Alternative music festival, M'ERA LUNA. Inspired by the classic Georges Melies 1902 film, 'Le Voyage dans la Lune'.

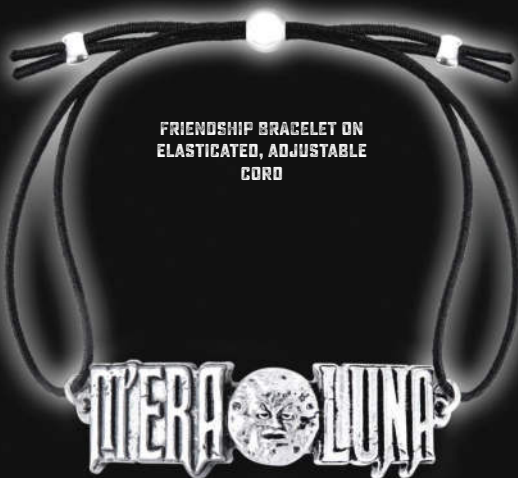


P813  
**M'ERA LUNA - MAN IN THE MOON**  
Velvet Ribbon Choker

Can also be tied around the wrist as a bracelet.



R218  
**M'ERA LUNA - MAN IN THE MOON**  
Ring  
(Sizes: Y, W, T, Q)



AML4  
**M'ERA LUNA MOON LOGO**  
Friendship Bracelet

The indubitable insignia of M'era Luna, the forlorn face of Méliès' 1902 man in the moon punctuating the festival's famous logo.

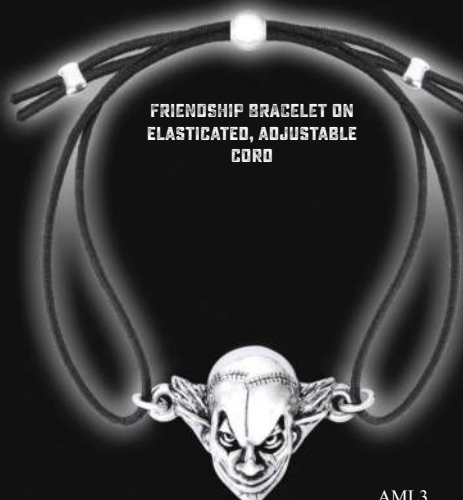


P782  
**M'ERA LUNA MELIE'S MOON**  
Pendant

A rare glimpse at the real man in the moon, seen through the thicket's gnarled and twisted branches. Pewter and mirror, relief modelled man in the moon pendant.



E386  
**M'ERA LUNA EVIL CLOWN**  
Ear Studs  
Relief modelled Evil Clown's head ear studs.



AML3  
**M'ERA LUNA EVIL CLOWN**  
Friendship Bracelet  
Relief modelled Evil Clown's head. On elasticated, adjustable cord.



P899  
**M'ERA LUNA MOON LOGO**  
Necklace

The indubitable insignia of M'era Luna, the forlorn face of Méliès' 1902 man in the moon punctuating the festival's famous logo.





**PP500**  
Metallica -  
Ninja Star



**PP501**  
Iron Maiden -  
Book Of Souls Eddie



**PP504**  
Iron Maiden -  
Piece Of Mind Eddie



**PP505**  
Motorhead -  
War Pig



**PP506**  
Pink Floyd -  
Dark Side Prism



**PP507**  
Metallica -  
Master Of Puppets  
1986 Cross



**PP508**  
Slayer -  
Pentagram Logo



**PP510**  
5 Finger Death Punch -  
Knuckle Duster



**PP515**  
David Bowie -  
Flash



**PP517**  
Judas Priest -  
Razorblade



**PP520**  
AC/DC -  
Lightning  
Logo



**PP522**  
Ghost -  
Papa Logo



**PP523**  
Metallica -  
M72 Logo



**PP524**  
AC/DC -  
PWR UP Flash Logo



**PP525**  
Behemoth -  
Cross Logo



**PP526**  
Behemoth -  
Opvs Contra Natvram



**PP527**  
Lamb of God -  
Logo



# EAR STUDS

# WRAP RINGS

# PIN BADGES



PE1

Motorhead -  
War Pig Studs



PE4

AC/DC -  
Logo Studs



PE6

Iron Maiden -  
Piece Of Mind  
Studs



PE8

David Bowie -  
Flash Studs



PE9

Pink Floyd -  
Division Bell  
Studs



PE16

Ghost -  
Logo  
Droppers



PE17

Metallica -  
Ninja Star Studs



PR51

Metallica -  
M72 Logo



PR52

David Bowie -  
Flash Logo



PR53

AC/DC -  
Logo



PC501

Motorhead -  
Logo



PC502

Pink Floyd -  
Division Bell Heads



PC504

Slayer - Eagle



PC505

Iron Maiden -  
Enamelled Logo



PC506

Metallica -  
Damage



PC513

Metallica -  
Justice For All



PC514

Mötley Crüe -  
Dr. Feelgood \*

\* Mötley Crüe items not available in the U.S.





**HRWL444**  
Metallica -  
Logo



**HRWL446**  
AC/DC -  
Logo



**HRWL456**  
Metallica -  
Classic Logo



**HRWL452**  
AC/DC -  
Lightning Logo



**HRWL459**  
Metallica -  
Ninja Star



**HRWL447**  
Iron Maiden -  
Logo



**HRWL457**  
Ghost -  
Logo



**HRWL453**  
Iron Maiden -  
Logo



**HRWL458**  
Behemoth -  
Logo



**HRWL460**  
Lamb of God -  
Logo



# ALCHEMY<sup>®</sup>™



## England • 1977

### Alchemy LIFETIME GUARANTEE . . . Alchemy is the best!

And we guarantee our Alchemy England crafted pewter products\* to be hand made to the highest standards and of the finest materials, and will therefore repair or replace any such purchased item suffering from defects or faulty workmanship at any time, free of charge!

(\*made at our Leicester workshops - please see our Guarantee and Returns Policy at [www.alchemyengland.com/guarantee](http://www.alchemyengland.com/guarantee)).

### Real Pewter!

The metal used in the manufacture of all Alchemy's pewter products is the highest grade "English Pewter". Some manufacturers misleadingly use the term 'pewter' to describe alloys containing quantities of lead, cadmium and nickel plating etc. This is **NON COMPLIANT** and results in inferior, more easily made products which are heavier, softer and of a darker colour and are much more prone to tarnishing and disfigurement. Please note, many imitations and forgeries are also made of zinc, which is cheap and will easily break. English Pewter is the finest grade of pewter, (to BSEN611-1:1995 standard). Traditionally, pewter was a mixture of lead and tin, but today, English Pewter is a rich, high-grade alloy of 92% tin with copper, (plus a few legitimate trace elements), and is regarded as a 'semi-precious' metal valued second only to silver. For jewellery and accessories this is the safest tin-based alloy in use and is fully lead, cadmium & nickel compliant to California Proposition 65 for total lead & cadmium content, Commission Regulation (EU) 494/2011 (REACH) for lead & cadmium and European standard BSEN1811:2011 for nickel. English Pewter is very much harder to craft than zinc alloys and the old and primitive forms of pewter, which contain significant amounts of toxic impurities which ease production, however, please beware as these poor alloys are still used by many manufacturers around the world today.

### Brand Protection:

All products, designs and images are the exclusive copyright of Alchemy Carta, England, and are registered designs and trademarks world-wide. Alchemy Studios conceive, research, design and develop all their ideas and products themselves, at considerable cost, to bring you fresh, new creations. Any attempt at forgery, imitation or passing-off endangers Alchemy's existence. Therefore, infringements will result in investigation leading to prosecution. Any assistance from our customers against piracy will be greatly appreciated. Please report via our website.

### Looking after your Alchemy

Pewter, like silver, may tarnish, but can easily be polished up to a brilliant lustrous shine, using a brass or silver polishing wad and a wipe with a dry cloth. DO NOT put pewter into a salt-loaded dishwasher, which could corrode a polished surface. Alchemy Guarantee: Alchemy will gladly replace any product proven to be defective.

### Trade Memberships

Alchemy Carta Ltd. are proud to be members of the Giftware Association.

### Trade & Identification Marks

All products, space permitting, are marked with one or more of the following identification marks, or their derivatives :



[www.alchemyengland.com](http://www.alchemyengland.com)



Model is wearing:

P864 Rose Briar necklace  
E425 Love Bats earrings

Model: Lillith Vampyre. @lillith\_vampyre

### Disclaimer:

At Alchemy we make all our jewellery by hand. We are very proud and work extremely hard to achieve our high standards. However, we also have to buy-in components from other suppliers and while we do our very best to maintain this quality, we cannot always rely on their availability or consistency. We therefore reserve the right to change crystals, chains and other findings, or even to discontinue pieces if necessary and apologise for any such disappointment.